



PROPOSAL

GLOBAL EXPANSION STRATEGY:
MERGING EQUITY INITIATIVES
WITH REVENUE STRATEGIES

PORTERVILLE
COLLEGE

August 2024

Table of Contents

Introduction	03
Dual-Focused Strategy for Sustainable Growth	05
Academic Access and Equity	08
Enrollment and Retention for ROI	12
Value of Exchange Programs and Transfer Pathways	21
Implementation Plan	23
Conclusion	31

Introduction

Background.

Porterville College is committed to expanding its international footprint through a strategic dual approach that emphasizes both academic equity and return on investment (ROI). Our goal is to build a global program that not only advances educational access and inclusivity but also strengthens our institutional viability through strategic revenue generation. This proposal outlines a comprehensive plan to achieve these objectives by leveraging our strengths and establishing meaningful international partnerships.

In today's interconnected world, the need for equitable access to education is more pressing than ever. Porterville College recognizes the transformative power of education and is committed to addressing disparities by expanding access to students from underserved and economically disadvantaged regions. By forming partnerships with international institutions in these areas, we aim to provide educational opportunities to those who might otherwise be excluded. This commitment to equity is not only a moral imperative but also a strategic advantage, as it enriches our academic community through diverse perspectives and collaborative learning experiences.

Simultaneously, Porterville College seeks to enhance its financial sustainability through a strategic focus on return on investment (ROI). Attracting international students from financially stable regions will help increase enrollment and tuition revenue. This revenue will be reinvested to support our equity-focused initiatives, creating a self-sustaining model that supports long-term growth and impact. By implementing a dual approach that balances equity with financial considerations, we aim to create a dynamic international program that benefits both our institution and our global partners.

Our approach involves several key initiatives designed to achieve these goals. By pursuing the objectives presented below, Porterville College aims to not only expand its global reach but also build a sustainable and impactful international program. This comprehensive approach will ensure that our efforts in equity and ROI are aligned, creating a dynamic and thriving global presence for our institution.

Introduction

Objectives.

- **Enhance Global Academic Partnerships:** Establish and strengthen partnerships with international institutions, particularly in socioeconomically disadvantaged regions, to promote equitable access to education.
- **Develop Equity-Focused Programs:** Implement and expand programs such as international virtual exchanges and global service initiatives to foster educational equity and cultural exchange.
- **Increase Enrollment Through Strategic Partnerships:** Partner with private 4-year institutions to create clear transfer pathways and attract international students, increasing enrollment and tuition revenue.
- **Boost Revenue and Financial Sustainability:** Generate additional revenue by attracting international students from financially capable regions and reinvest this revenue to support and expand equity-focused initiatives.
- **Enhance Institutional Reputation:** Improve Porterville College's global reputation by showcasing successful international partnerships and high-impact programs that integrate equity and ROI.
- **Support Academic and Cultural Enrichment:** Provide students and faculty with diverse learning experiences through international exchanges and collaborative projects, enriching academic programs and broadening perspectives.
- **Secure Funding and Grants:** Pursue grants and funding opportunities that align with global education equity and international program development to support and sustain our initiatives.
- **Create a Sustainable Growth Model:** Develop a growth model that leverages the synergy between equity initiatives and revenue generation for long-term sustainability and impact.
- **Foster Global Citizenship:** Encourage global citizenship among students and faculty by participating in projects that address global challenges and contribute to a more equitable world.
- **Expand Global Networks and Opportunities:** Build and broaden a network of international institutions, alumni, and partners to open new avenues for collaboration, student exchange, and academic advancement.

Dual-Focused Strategy for Sustainable Growth Overview.

Porterville College's dual-focused strategy is designed to create a sustainable model for international growth by balancing equity-driven initiatives with revenue-generating efforts. The core of this strategy involves two interconnected approaches:

- **Enhancing Academic Access and Equity:** By partnering with institutions in underserved regions and developing programs that promote global educational access, we aim to address disparities and support students from diverse backgrounds.
- **Optimizing Enrollment and Retention for ROI:** By targeting international students from financially stable regions and creating strategic partnerships with private 4-year institutions, we will increase enrollment and revenue, ensuring financial sustainability.

This dual approach not only addresses the immediate needs of students and institutions but also creates a cycle of reinvestment and growth. The revenue generated from enrollment will be used to support and expand equity-focused programs, creating a dynamic and sustainable model for international engagement.

Dual-Focused Strategy for Sustainable Growth

Interconnected Value of Dual Approach.

The dual-focused strategy of Porterville College—balancing equity-focused partnerships with revenue-generating enrollments—offers a synergistic model that enhances both social impact and financial stability. This interconnected approach creates a dynamic ecosystem where each component supports and amplifies the other, resulting in a sustainable and impactful international program.

Equity-Focused Partnerships

Initial Investment and Grants:

Equity-focused partnerships require an initial investment to establish connections and develop programs with institutions in underserved regions. This upfront commitment can be leveraged to secure grants and external funding from organizations dedicated to educational equity. By creating programs that align with global education goals, such as virtual exchanges and collaborative research initiatives, Porterville College can attract funding from sources like the Fulbright Program, USAID, and UNESCO, which support projects aimed at improving educational access in disadvantaged areas.

Academic Enrichment through Diversity:

These partnerships foster academic enrichment by introducing diverse perspectives and experiences into the college community. Students and faculty benefit from cross-cultural exchanges, collaborative research, and a broader understanding of global issues. This diversity enhances classroom discussions, stimulates innovative problem-solving, and contributes to a more inclusive academic environment. As a result, the college's educational offerings are enriched, leading to a more globally aware and culturally competent student body.

Revenue-Generating Enrollments

Targeted Recruitment and Increased Tuition:

The second component of the dual approach focuses on attracting students from financially stable regions through targeted recruitment strategies. By establishing clear transfer pathways with private 4-year institutions and offering incentives such as transfer scholarships, Porterville College can draw international students who are able to pay higher tuition fees. This approach boosts enrollment numbers and increases the college's revenue stream.

Dual-Focused Strategy for Sustainable Growth

Interconnected Value of Dual Approach.

Reinvestment into Equity Initiatives:

The revenue generated from these international enrollments provides the financial foundation to reinvest in equity-focused initiatives. The funds can be used to expand and enhance programs that support students from underserved regions, such as additional virtual exchange opportunities, scholarships, and support services. This reinvestment creates a feedback loop where financial gains from enrollment growth are channeled back into initiatives that promote educational equity, thus strengthening the college's commitment to global education.

Sustainable Model: Continuous Reinvestment and Growth

Continuous Reinvestment:

The interconnected nature of the dual approach ensures a sustainable model for growth. Revenue from international enrollments supports and expands equity-focused programs, creating a cycle of continuous improvement and development. By reinvesting in both academic access initiatives and revenue-generating strategies, Porterville College can sustain and grow its international program over the long term.

Growth and Impact:

This sustainable model fosters ongoing growth and impact by leveraging the synergies between equity and financial objectives. As the college's international presence expands, it attracts more partnerships, grants, and students, further enhancing its global reputation and institutional capabilities. The continuous loop of reinvestment and growth not only supports the college's financial health but also strengthens its role as a leader in global education.

The interconnected value of Porterville College's dual-focused approach lies in its ability to harmonize efforts to enhance educational equity with strategies for financial sustainability. By aligning these goals, the college creates a robust and dynamic international program that benefits students, faculty, and the broader community. This approach ensures that both social impact and financial stability are achieved, paving the way for long-term success and a lasting contribution to global education.

Academic Access and Equity

Global Access, Local Impact.

Porterville College's commitment to academic access and equity centers on forming strategic partnerships with institutions located in socioeconomically disadvantaged regions. The college aims to create pathways for students who might otherwise face significant barriers to higher education education by targeting collaborations with universities and educational organizations in underrepresented and underserved areas. These partnerships are designed to provide access to quality educational resources and opportunities, fostering a more inclusive global academic community.

Ongoing Projects

Partnerships in Iraq:

In 2021, Porterville College began collaborating in the Global Solutions Sustainability Challenge. The Global Solutions. Sustainability Challenge is implemented by IREX and is supported by the J. Christopher Stevens Virtual Exchange Initiative (JCSVEI). JCSVEI is a U.S. Department of State's Bureau of Educational and Cultural Affairs program administered by the Aspen Institute. This initiative focused on addressing sustainability challenges and developing solutions with a binational partnership between Porterville College and universities in the Kurdish region of Iraq. Students participated in a course focused on entrepreneurship and engineering skills to accomplish these goals. The partnership expanded to include a year of collaboration with Stanford's EPIC program. At the request of our partners, Polytechnic University, the project grew to specifically target and support women, providing them with foundational knowledge in entrepreneurship and engineering. Institutionalizing this relationship with an official sister-college partnership has been paramount in supporting our growing endeavors. This ongoing collaboration continues to be a cornerstone of our equity efforts, providing critical support to underrepresented students and fostering academic growth in a region with significant educational needs.

Collaborations in Mexico:

The student population at Porterville College is primarily Mexican, with the majority having ties to the Michoacán region. In support of our student's natural ties, language skills, and the heavy agriculture emphasis in our Tulare County, we have established a sister-college relationship with Instituto Tecnológico Superior De Los Reyes in Mexico, focusing on innovative agricultural engineering. This partnership includes joint projects such as a semester-long business project and an international conference held in Los Reyes. These initiatives promote academic exchange and support the development of practical skills in agriculture, benefiting students from both institutions. This ongoing collaboration underscores our commitment to creating meaningful educational opportunities in underserved regions.

Academic Access and Equity

Global Access, Local Impact.

International Virtual Exchanges:

Our involvement in international virtual exchanges, including the one with Soran University and Erbil University, enhances access to global learning experiences. These virtual exchanges support faculty and student collaboration, bridging gaps caused by geographical and financial barriers. They provide students with exposure to diverse educational perspectives and cultural insights, promoting global citizenship and educational equity.

Opportunities for Growth

Expanding Partnerships:

We are exploring additional partnerships with institutions in regions such as Ghana, India, Cuba, and Spain. Each of these regions presents unique opportunities for expanding our equity-focused initiatives:

- **Ghana:** The development of an electric vehicle curriculum in collaboration with local institutions presents an opportunity to address sustainability challenges while providing students with valuable skills in emerging technologies.
- **India:** Partnering with Tabula Rasa in rural India offers a chance to support high-risk youth through scholarships and educational opportunities at Porterville College.
- **Cuba:** Engaging with the University of Ciego de Avila Maximo Gomez Baez to present on women's entrepreneurship in agriculture can foster new academic collaborations and enrich our program offerings.
- **Spain:** Collaborating with the University of Seville on fine arts integration provides an opportunity to enhance our arts curriculum and create new cross-cultural learning experiences.

Grant Funding Opportunities:

Successful equity-focused initiatives attract funding from organizations dedicated to promoting educational access and equity. Grants provide essential financial support, enabling the college to expand and enhance its programs while raising its profile as a leader in global education equity.

Academic Access and Equity

Global Access, Local Impact.

Benefits

Social Impact - Global Education Equity:

Establishing partnerships with institutions in disadvantaged regions directly contributes to global education equity. By collaborating with schools in underprivileged areas, Porterville College helps bridge the educational gap that exists due to economic disparities. This initiative is not only about providing educational access but also about empowering students from these regions with opportunities that can significantly alter their educational and professional trajectories. These partnerships offer students from these areas access to high-quality educational experiences and resources that they may not otherwise have.

The social impact of this initiative extends beyond the immediate beneficiaries. It contributes to a broader movement toward educational justice, promoting fairness and equality in global education. By supporting students who face financial and institutional barriers, Porterville College plays a role in creating a more equitable and inclusive global society.

Academic Enrichment - Cultural Exchanges and Collaborative Research:

Partnerships with international institutions offer substantial academic enrichment through cultural exchanges and collaborative research opportunities. These exchanges allow students and faculty from Porterville College to engage with diverse perspectives, enhancing their understanding of global issues and contributing to a richer educational experience. Students participate in joint projects, engage in cross-cultural dialogue, and gain exposure to different academic methodologies and approaches.

Collaborative research initiatives resulting from these partnerships foster innovation and address global challenges from multiple viewpoints. Joint research projects can lead to breakthroughs in various fields, leveraging the unique insights and expertise of researchers from different regions. This cross-pollination of ideas not only advances academic knowledge but also enhances the quality and relevance of research outputs.

Grant Opportunities: Funding for Equity Initiatives

Engaging in equity-focused partnerships opens doors to a range of grant opportunities aimed at supporting global education initiatives. Organizations such as the Fulbright Program, USAID, and UNESCO offer funding for projects that promote educational access and equity. These grants can support various aspects of the partnership, including program development, student scholarships, faculty exchanges, and infrastructural improvements.

Academic Access and Equity

Global Access, Local Impact.

Social Impact - Global Education Equity:

Securing grant funding enhances the sustainability and impact of equity-focused initiatives. It provides the necessary financial resources to expand and deepen collaborative programs, ensuring that they reach a larger audience and have a more profound effect. Additionally, successful grant applications can elevate Porterville College's profile as a leader in global educational equity, attracting further funding and support.

The academic access and equity component of Porterville College's international strategy is vital for fostering a more inclusive and globally connected educational environment. By forming partnerships with institutions in socioeconomically disadvantaged regions, the college not only addresses educational disparities but also enriches its academic community through cultural exchanges and collaborative research. Furthermore, these efforts open avenues for grant funding, ensuring that equity-focused initiatives are well-supported and sustainable. Through this approach, Porterville College contributes to a fairer global education landscape while enhancing its own academic and social impact.

Enrollment and Retention for ROI

Smart Recruitment for Sustainable Growth.

Porterville College is committed to enhancing its financial stability and institutional growth by focusing on strategic recruitment of international students from financially capable countries. The primary objective is to attract these students to Porterville College for an initial two-year period. During this time, students will complete their associate degrees before transferring to a four-year university through a guaranteed transfer program. This program is complemented by scholarships provided in collaboration with our partner institutions. This strategic approach aims to increase revenue through tuition, elevate the college's reputation, and create a sustainable funding model that supports ongoing and future equity-focused initiatives.

Benefits

Revenue Generation - Increased Tuition:

The recruitment of international students from financially stable backgrounds presents a significant opportunity for revenue enhancement:

- **Higher Tuition Fees:** International students generally pay higher tuition fees compared to in-state students. By focusing on this demographic, Porterville College can substantially increase its tuition revenue. This influx of funds is vital for several key areas, including:
 - **Operational Costs:** Revenue from international tuition will help cover the college's operational expenses, ensuring that daily academic and support services are well-funded and maintained.
 - **Campus Development:** Increased funds will enable investment in campus infrastructure, including upgrading facilities, modernizing classrooms, and enhancing technological resources to provide a superior educational environment.
 - **Academic Excellence:** The additional revenue will support academic programs, faculty development, and research initiatives, contributing to the overall quality and competitiveness of the college.

Enrollment and Retention for ROI

Smart Recruitment for Sustainable Growth.

Enhanced Reputation - Diverse Student Body:

Attracting a diverse group of international students not only enriches the campus environment but also elevates the college's standing on a global scale:

- **Global Perspective:** An international student body brings a multitude of perspectives and experiences, which enriches classroom discussions and promotes a deeper understanding of global issues. This diversity prepares all students for a workforce that increasingly operates in a global context.
- **Institutional Prestige:** A reputation for welcoming and supporting international students enhances the college's global prestige. This improved reputation can attract additional international students, faculty, and partners, further strengthening the college's global presence and appeal.

Sustainable Funding - Reinvestment into Equity Initiatives:

Revenue generated from international tuition can be strategically reinvested to support and expand equity-focused initiatives:

- **Scholarships and Grants:** Funds can be allocated to establish and increase scholarships for students from disadvantaged backgrounds, making higher education more accessible and promoting social equity.
- **International Partnerships:** The revenue can be used to strengthen and develop new partnerships with institutions in underrepresented regions, fostering academic collaboration and broadening educational opportunities for a diverse range of students.
- **Program Development:** Investment in programs that support student success, such as academic support services, cultural adjustment resources, and career development opportunities, will help ensure that all students, regardless of background, have the tools they need to succeed.

Enrollment and Retention for ROI

Smart Recruitment for Sustainable Growth.

Strategic Recruitment

Targeted Recruitment Campaigns:

To effectively attract international students, Porterville College will develop and implement comprehensive international recruitment strategies:

- **Market Analysis:** Conduct thorough research to identify countries and regions with high potential for students who are financially capable and seeking higher education opportunities in the U.S. This analysis will include evaluating educational trends, economic conditions, and the competitive landscape.
- **Promotional Materials:** Develop targeted marketing materials that highlight the benefits of studying at Porterville College, including the unique opportunities provided by the guaranteed transfer pathways and scholarships. These materials will be tailored to resonate with prospective students and their families.
- **Recruitment Partners:** Engage with international recruitment agencies and attend global education fairs to reach potential students. Building strong relationships with these partners will facilitate effective recruitment and provide access to a wider pool of qualified candidates.

Robust Support Services:

Providing exceptional support services is crucial to ensuring the success and retention of international students:

- **Academic Advising:** Offer dedicated academic advising services tailored to the needs of international students. Advisors will assist students in navigating their academic journey, selecting courses, and preparing for transfer to a four-year institution.
- **Cultural Support:** Implement programs and resources to help students adjust to life in a new country and academic environment. This includes orientation sessions, cultural exchange activities, and counseling services to address any challenges they may face.
- **Career Services:** Provide career counseling and internship opportunities to help students gain practical experience and prepare for their future careers. Support in resume building, job search strategies, and interview preparation will enhance students' employability and career prospects.

Enrollment and Retention for ROI

Smart Recruitment for Sustainable Growth.

Global Enrollment Growth through 4-Year College Partnerships

Porterville College proposes a strategic partnership with private 4-year institutions to attract international students. This strategy provides clear pathways from community college to bachelor's degrees, leveraging international recruiters and ensuring financial and academic success.

Strategy Overview:

Our strategy to enhance Porterville College's international reach involves forming key partnerships, utilizing expert recruiters, and ensuring student success through targeted support systems.

- **Partnerships with Private 4-Year Schools:** To provide a streamlined educational journey for international students, Porterville College will establish strategic partnerships with select private 4-year institutions. This approach is designed to offer students a clear and guaranteed path from community college to bachelor's degrees. By formalizing agreements that ensure admission for students who complete specified credit hours at Porterville College, and by securing transfer scholarships to mitigate financial barriers, we aim to create a structured and supportive environment that facilitates both academic progression and financial feasibility.
- **Utilization of International Recruiters:** To attract and enroll a diverse cohort of international students, Porterville College will engage international recruiters who specialize in global student placements. These recruiters will play a pivotal role in identifying and recruiting prospective students for our community college program. By implementing a dual commission structure, where recruiters earn commissions from both Porterville College and the partner 4-year institutions, we will incentivize a focused effort on both the community college phase and the subsequent transfer to a 4-year institution. This strategic approach ensures that our recruitment efforts are aligned with our long-term goals of increased international enrollment and successful student transitions.
- **Ensuring Completion Rates:** To maximize the success and retention of international students throughout their academic journey, Porterville College will implement comprehensive support systems and innovative credit transfer mechanisms. The reverse credit transfer system will allow students to receive their associate degrees upon meeting the requirements for their bachelor's degrees at partner institutions. Additionally, dedicated academic advising and support services will be established to guide students through their educational experiences at Porterville College, ensuring they are well-prepared for their transition to 4-year institutions. This holistic support structure is crucial for maintaining high completion rates and achieving our goals of academic excellence and student success.

Enrollment and Retention for ROI

Smart Recruitment for Sustainable Growth.

Benefits:

This strategy delivers multiple advantages for students, Porterville College, partner institutions, and international recruiters, fostering a mutually beneficial ecosystem that drives growth and success for all stakeholders involved.

- **For Students:** Students stand to gain significant advantages from this initiative, which provides a clear and affordable pathway to higher education, ensures a smooth transition to a 4-year university, and offers financial support to reduce the overall cost of their education.
 - **Affordable Pathway:** Students benefit from an economically accessible route to higher education by starting their academic journey at Porterville College. This pathway offers a cost-effective way to complete the initial two years of their degree at a community college before transferring to a 4-year institution. This approach significantly reduces the financial burden compared to beginning at a 4-year institution directly.
 - **Guaranteed Progression:** Our strategic partnerships with private 4-year institutions ensure a smooth and predictable transition from Porterville College to a bachelor's program. Students who meet the academic criteria are guaranteed admission to partner universities, thus eliminating uncertainties associated with transferring and facilitating a seamless continuation of their education.
 - **Financial Support:** Through transfer scholarships offered by partner 4-year institutions, students can benefit from substantial financial assistance. These scholarships help alleviate the cost of tuition and associated expenses at the 4-year institution, making the pursuit of higher education more affordable and achievable.
- **For Porterville College:** Porterville College will experience several key benefits from this strategy, including increased international enrollment, an enhanced reputation through successful partnerships, and a sustainable financial model that supports ongoing institutional priorities and equity initiatives.
 - **Increased Enrollment:** The strategy aims to significantly boost international student enrollment at Porterville College. By attracting students from around the globe, the college can enhance its student body diversity and increase tuition revenue, which supports institutional growth and expansion.

Enrollment and Retention for ROI

Smart Recruitment for Sustainable Growth.

- **Enhanced Reputation:** Successfully implementing this strategy will strengthen Porterville College's reputation as an institution committed to providing valuable international educational opportunities. The establishment of effective partnerships and high transfer rates to esteemed 4-year institutions will enhance the college's global standing and appeal.
- **Sustainable Model:** The revenue generated from increased international enrollment will be strategically reinvested into Porterville College's equity-focused initiatives and institutional priorities. This reinvestment supports the development of programs and services that further enhance educational access and support for all students.
- **For Porterville College:** Porterville College will experience several key benefits from this strategy, including increased international enrollment, an enhanced reputation through successful partnerships, and a sustainable financial model that supports ongoing institutional priorities and equity initiatives.
 - **Increased Enrollment:** The strategy aims to significantly boost international student enrollment at Porterville College. By attracting students from around the globe, the college can enhance its student body diversity and increase tuition revenue, which supports institutional growth and expansion.
 - **Enhanced Reputation:** Successfully implementing this strategy will strengthen Porterville College's reputation as an institution committed to providing valuable international educational opportunities. The establishment of effective partnerships and high transfer rates to esteemed 4-year institutions will enhance the college's global standing and appeal.
 - **Sustainable Model:** The revenue generated from increased international enrollment will be strategically reinvested into Porterville College's equity-focused initiatives and institutional priorities. This reinvestment supports the development of programs and services that further enhance educational access and support for all students.
- **For Partner 4-Year Institutions:** Partner 4-year institutions will reap substantial benefits from this collaboration, including the arrival of well-prepared transfer students, increased enrollment in upper-division courses, and a more diverse student body that enriches the campus environment.

Enrollment and Retention for ROI

Smart Recruitment for Sustainable Growth.

- **Qualified Transfer Students:** Partner institutions will benefit from receiving well-prepared and academically qualified transfer students who have completed rigorous coursework at Porterville College. These students will be equipped to excel in upper-division coursework, contributing positively to the academic environment.
- **Increased Enrollment:** The influx of transfer students from Porterville College will help partner 4-year institutions fill upper-division class seats, thus optimizing their enrollment numbers and contributing to overall revenue generation.
- **Enhanced Diversity:** By integrating students from diverse international backgrounds, partner institutions will enrich their campus communities with a broad range of global perspectives and experiences, fostering a more inclusive and globally aware learning environment.
- **For International Recruiters:** International recruiters will find this strategy advantageous as it offers financial incentives through commissions and opens enhanced career opportunities by aligning their efforts with the recruitment goals of both community colleges and 4-year institutions.
 - **Financial Incentives:** Recruiters will benefit from dual commissions earned through successful placements of international students at both Porterville College and partner 4-year institutions. This financial incentive structure encourages sustained recruitment efforts and aligns their goals with the institutions' objectives.
 - **Career Opportunities:** Successful recruitment efforts will enhance the recruiters' professional reputation and provide increased opportunities for future recruitment projects. Building a track record of effective placements will strengthen their career prospects and establish them as key players in the international education market.

Implementation Plan:

To effectively operationalize our strategic partnership and ensure its success, we have developed a comprehensive Implementation Plan. This plan outlines the critical steps required to establish formal agreements, create compelling marketing materials, implement robust support systems, and continuously monitor and refine the program. By following this structured approach, we aim to seamlessly integrate the proposed initiatives, ensuring they deliver maximum benefits to students, Porterville College, partner institutions, and international recruiters.

Enrollment and Retention for ROI

Smart Recruitment for Sustainable Growth.

- **Establish Agreements:** To ensure the smooth operation of the transfer pathway program, it is crucial to solidify foundational agreements with both private 4-year institutions and international recruiters.
 - **Formalize Agreements with Private 4-Year Institutions:** Initiate and negotiate detailed agreements with selected private 4-year universities to secure guaranteed admission for Porterville College students who complete 30-60 credits. These agreements should outline the specific criteria for transfer, scholarship provisions, and support services that will be available to students.
 - **Formalize Agreements with International Recruiters:** Develop and finalize contracts with international recruitment agencies that detail their roles, responsibilities, and commission structures. Ensure that these contracts incentivize recruiters to effectively promote both Porterville College and the associated 4-year institutions, enhancing the attractiveness of the transfer pathway program.
- **Develop Marketing and Recruitment Materials:** Creating effective marketing and recruitment materials is essential for attracting international students and informing them about the benefits and details of the pathway program.
 - **Create Promotional Materials:** Design and produce high-quality marketing collateral, such as brochures, flyers, and digital content, that highlights the benefits of the transfer pathway program. These materials should emphasize the financial advantages, academic support, and guaranteed progression to a 4-year degree, and be tailored for both international students and their families.
 - **Train Recruiters on the Program's Advantages:** Conduct comprehensive training sessions for international recruiters to ensure they understand the unique features and benefits of the pathway program. This training should include detailed information on the program's structure, transfer agreements, scholarship opportunities, and effective recruitment strategies to attract qualified students.
- **Implement Support Systems:** Effective support systems are vital for ensuring that international students succeed at Porterville College and make a seamless transition to their 4-year degree programs.

Enrollment and Retention for ROI

Smart Recruitment for Sustainable Growth.

- **Set Up Academic Advising and Support for International Students:** Develop and deploy robust academic advising services tailored to the needs of international students at Porterville College. This includes offering guidance on course selection, academic progress, and transition support, ensuring students are well-prepared for their studies and eventual transfer to a 4-year institution.
- **Develop a Reverse Credit Transfer System:** Collaborate with partner 4-year institutions to create and implement a reverse credit transfer system. This system should facilitate the seamless transfer of credits earned at the 4-year institution back to Porterville College, allowing students to receive an associate degree upon completing their bachelor's degree requirements.
- **Monitor and Evaluate:** Ongoing monitoring and evaluation are essential to assess the success of the program and to make data-driven improvements.
 - **Track Enrollment Numbers, Student Progress, and Transfer Rates:** Establish a system to continuously monitor key metrics such as enrollment figures, student academic performance, and transfer rates. This data will help assess the effectiveness of the pathway program and identify areas for improvement.
 - **Collect Feedback from Stakeholders:** Regularly gather and analyze feedback from students, recruiters, and partner institutions to evaluate their experiences with the program. Use this feedback to make informed adjustments and enhancements to the program, ensuring it remains effective and responsive to the needs of all stakeholders involved.

Porterville College's dual-faceted approach—integrating equity-focused partnerships with revenue-driven enrollment strategies—provides a comprehensive framework for expanding international reach. By leveraging ongoing projects, exchange programs, and transfer pathways, the college can enhance academic equity, generate sustainable revenue, and contribute to a globally impactful educational environment.

This integrated strategy not only addresses global educational disparities but also ensures financial sustainability and growth, creating a virtuous cycle of academic excellence and institutional development.

Value of Exchange Programs and Transfer Pathways Enriching Minds, Expanding Futures.

Porterville College recognizes the profound impact that both exchange programs and transfer pathways can have on its academic community, its reputation, and its strategic growth. By integrating these initiatives, the college aims to foster a globally connected learning environment while enhancing institutional success and student outcomes.

Exchange Programs

Exchange programs provide invaluable academic and cultural enrichment, enhancing both the educational experience and institutional reputation.

Academic and Cultural Enrichment:

Exchange programs provide students and faculty with unique opportunities to engage with diverse perspectives and educational practices from around the world. These interactions enrich the academic experience by:

- **Broadening Perspectives:** Students and faculty gain exposure to different cultural and academic viewpoints, which enhances classroom discussions and promotes a more comprehensive understanding of global issues. This exposure fosters critical thinking, creativity, and innovation in research and learning.
- **Promoting Cultural Competency:** Participants develop greater cultural awareness and sensitivity, which is increasingly important in a globalized world. This cultural competence not only benefits academic discourse but also prepares students for international careers and collaborations.

Enhanced Reputation:

Engaging in robust exchange programs significantly enhances Porterville College's standing in the global education community:

- **Institutional Prestige:** A strong reputation for international collaboration attracts high-caliber students and faculty, as well as prospective partners and funding sources. This enhanced prestige can lead to more strategic alliances and research opportunities.
- **Increased Visibility:** Active participation in global exchange programs elevates the college's visibility on the international stage, positioning it as a leader in fostering global education and cross-cultural understanding.

Value of Exchange Programs and Transfer Pathways Enriching Minds, Expanding Futures.

Transfer Pathways

Transfer pathways ensure student success and deliver significant institutional benefits by creating clear routes from community college to 4-year universities.

Student Success:

Transfer pathways are designed to support international students in their journey from community college to a four-year degree, ensuring their academic and personal success:

- **Seamless Transition:** By offering guaranteed transfer agreements and clearly defined pathways, Porterville College reduces the uncertainty and barriers associated with transferring to a four-year institution. This clear progression helps students focus on their studies and maintain motivation throughout their educational journey.
- **Academic Support:** Enhanced support services, including academic advising and career counseling, are provided to help students navigate their transfer and adapt to their new academic environment. These services contribute to higher retention rates and overall student satisfaction.

Institutional Benefits:

The implementation of effective transfer pathways also yields significant benefits for Porterville College:

- **Increased Enrollment and Revenue:** Attracting international students through well-defined transfer pathways boosts enrollment numbers and generates additional revenue. This influx of students helps to sustain and expand academic programs and resources.
- **Enhanced Institutional Growth:** The successful transfer of students to partner four-year institutions strengthens the college's relationships with these partners and opens up further opportunities for collaboration. Additionally, the increased visibility and success of the program contribute to the institution's long-term growth and stability.

By integrating exchange programs and transfer pathways, Porterville College can create a dynamic and supportive educational environment that benefits both students and the institution. These initiatives not only enhance academic experiences and global engagement but also drive institutional growth and sustainability.

Integrated Implementation Plan

Balancing Equity and ROI.

To maximize the impact of Porterville College's international growth initiatives, the implementation plan follows a comprehensive workflow that integrates both equity-focused and ROI-focused strategies. This plan is designed to create a balanced approach that enhances academic opportunities, attracts international students, and generates sustainable revenue. Each step in the workflow is crucial to ensuring the success and scalability of the combined equity and ROI strategies.

Implementation Overview

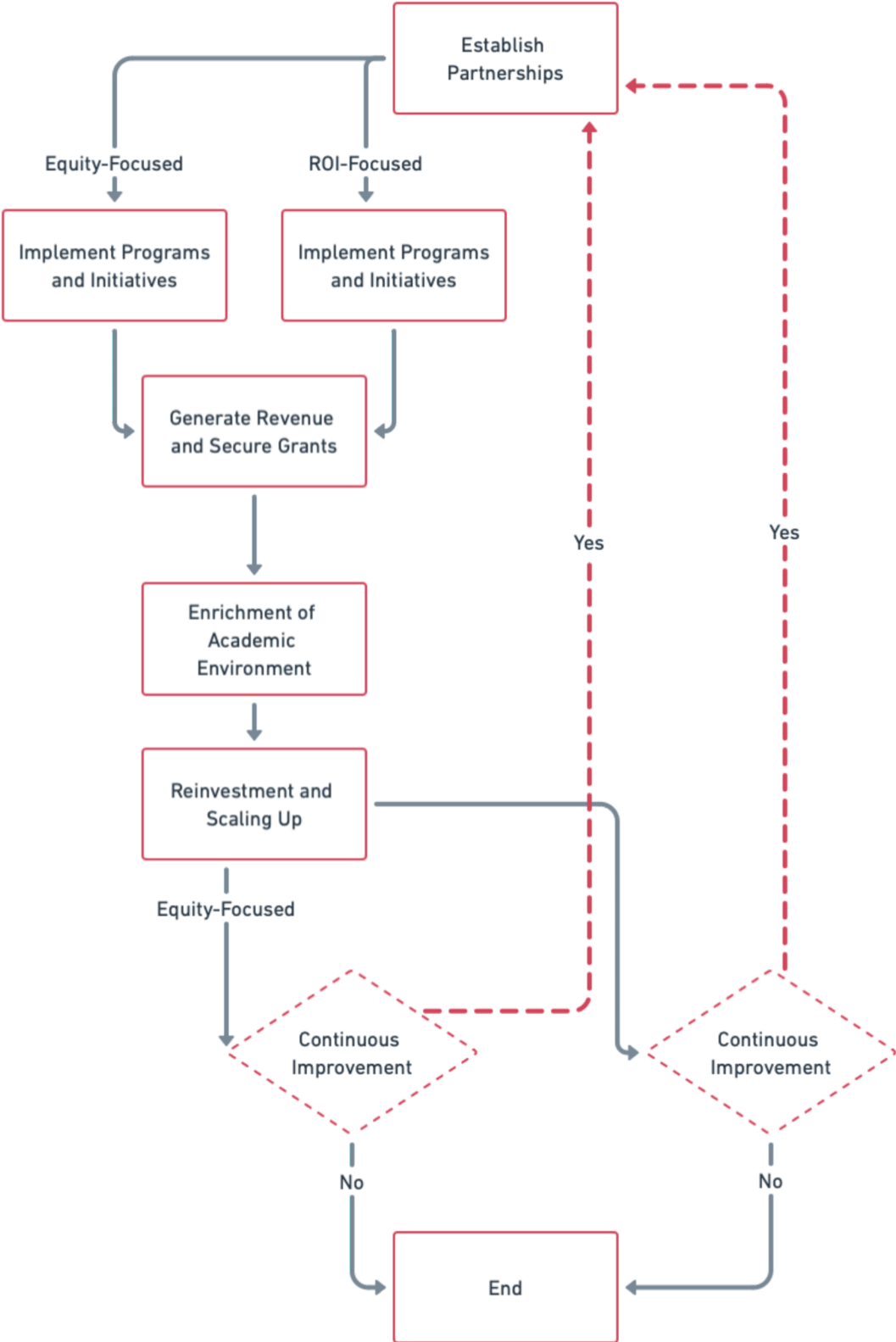
The following flowchart outlines the strategic process for implementing a dual-focused approach to enhance Porterville College's international programs. The plan integrates equity-focused partnerships with revenue-driven strategies to create a sustainable and impactful international education framework.

- 1. Establish Partnerships:** Initiate and formalize partnerships with institutions in both disadvantaged and financially stable regions. These collaborations lay the foundation for effective exchange programs and transfer pathways, creating opportunities for students worldwide.
- 2. Implement Programs and Initiatives:** Roll out educational programs, exchange opportunities, and marketing strategies based on established partnerships. This step focuses on executing the planned initiatives to attract and support international students.
- 3. Generate Revenue and Secure Grants:** Increase tuition revenue from international students while pursuing grants from prominent educational organizations. This financial influx supports the program's sustainability and allows for further development of equity-focused initiatives.
- 4. Enrich Academic Environment:** Leverage the benefits of diverse student and faculty exchanges to enhance the academic atmosphere. Cultural exchanges and collaborative research contribute to a richer, more globalized educational experience.
- 5. Reinvest and Scale Up:** Allocate revenue and grant funds to support and expand successful programs. Scaling up these initiatives ensures ongoing growth and development, enhancing the overall effectiveness of the international program.
- 6. Continuous Improvement:** Regularly evaluate and refine programs based on feedback and outcomes. Continuous improvement ensures that the international strategies remain effective and adaptable, fostering long-term success and impact.

Integrated Implementation Plan

Balancing Equity and ROI.

Implementation Overview



Integrated Implementation Plan

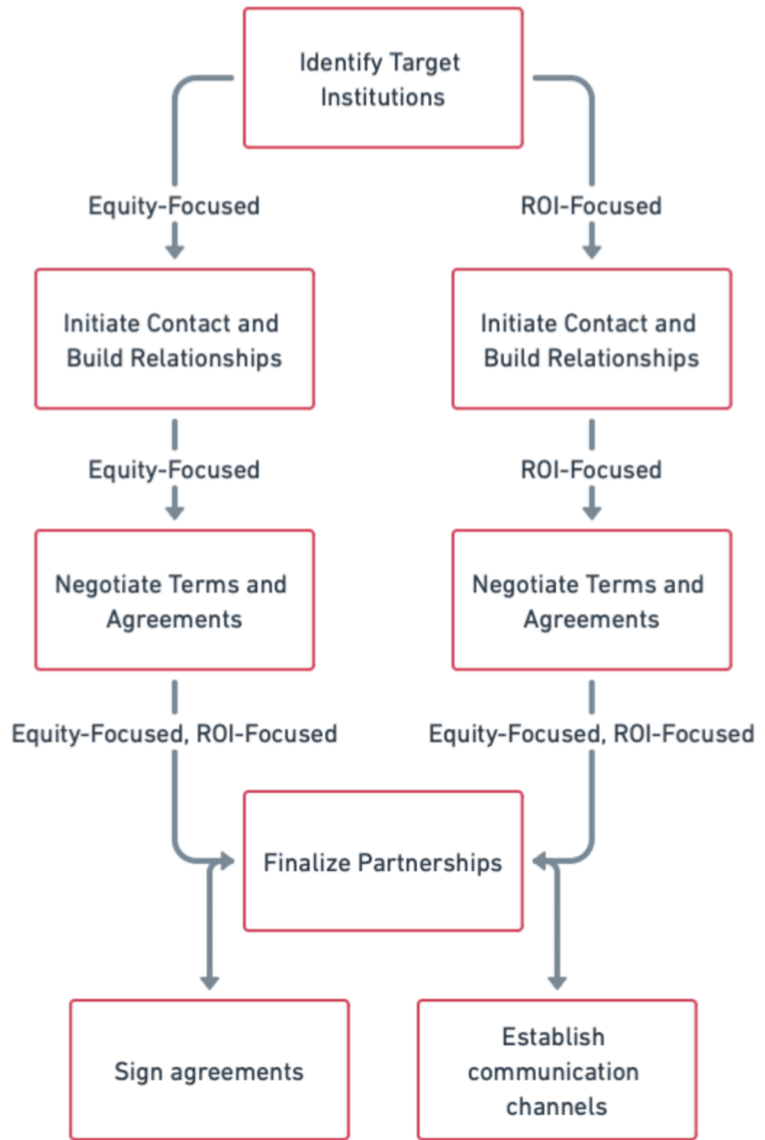
Balancing Equity and ROI.

Establish Partnerships

Form strategic alliances that support both equity and ROI objectives.

Actions:

- **Equity-Focused Partnerships:**
 - **Identify and Engage Institutions:** Target partnerships with colleges and universities in socioeconomically disadvantaged regions. Initiate discussions to establish mutual goals and collaborative opportunities.
 - **Develop Partnership Agreements:** Draft agreements that outline joint programs, exchange opportunities, and shared goals for improving access to education.
- **ROI-Focused Partnerships:**
 - **Collaborate with Financially Stable Institutions:** Forge relationships with 4-year institutions in financially stable countries to create transfer pathways that attract international students.
 - **Negotiate Transfer Pathways:** Formalize agreements that guarantee admission for Porterville College students and offer transfer scholarships to facilitate smooth transitions.



Integrated Implementation Plan

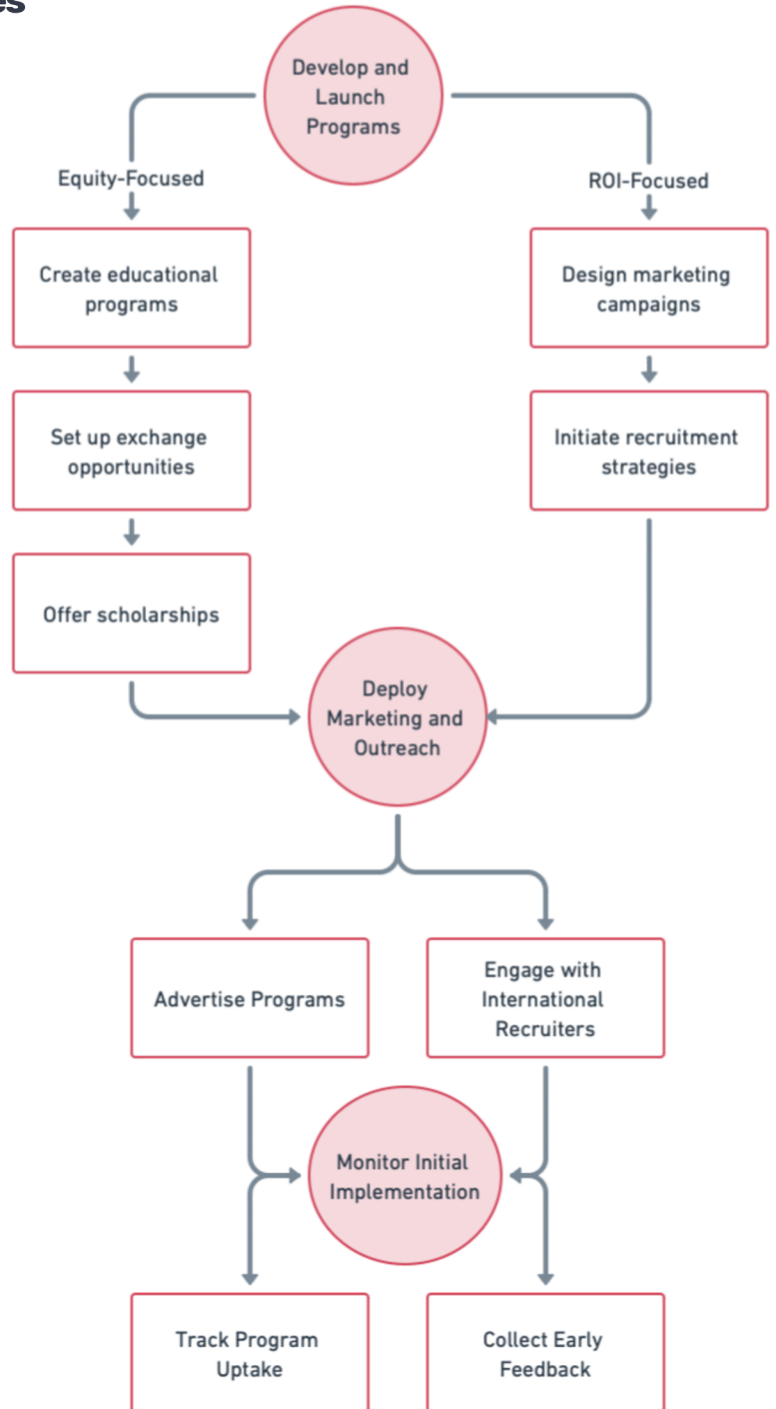
Balancing Equity and ROI.

Implement Programs and Initiatives

Launch and execute programs that align with both equity and ROI strategies.

Actions:

- **Equity-Focused Programs:**
 - **Educational Programs:** Develop and roll out programs that offer academic and cultural enrichment, including exchange programs and collaborative research opportunities.
 - **Scholarships and Support:** Establish scholarships for students from disadvantaged regions and provide additional support services to ensure their success.
- **ROI-Focused Programs:**
 - **Marketing and Outreach:** Create targeted marketing campaigns to attract international students to Porterville College. Highlight the benefits of the pathway programs and the advantages of studying at a community college before transferring to a 4-year institution.
 - **Recruitment Initiatives:** Work with international recruiters to promote the program and secure high-quality student placements.



Integrated Implementation Plan

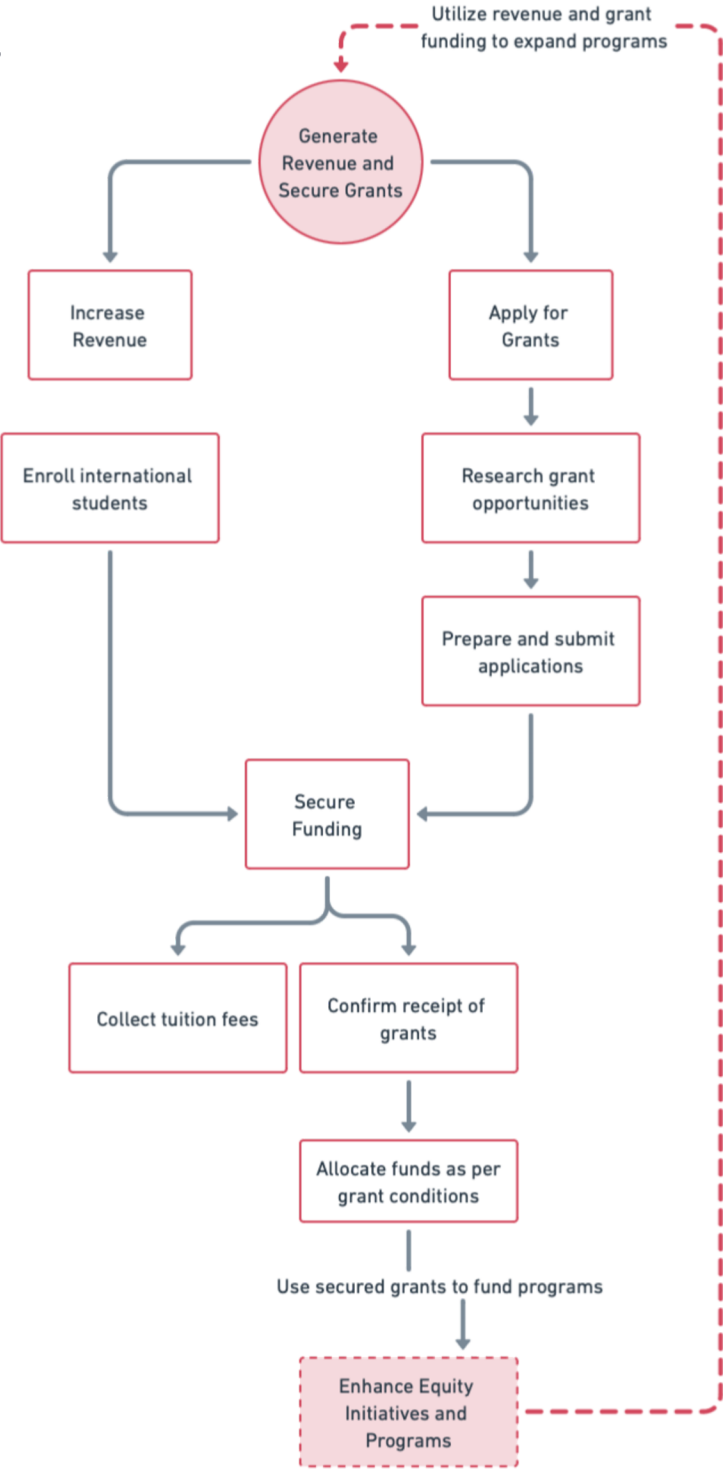
Balancing Equity and ROI.

Generate Revenue and Secure Grants

Increase financial resources through tuition revenue and grants to support both strategies.

Actions:

- **ROI-Focused Revenue Generation:**
 - **Increase Tuition Revenue:** Capitalize on the influx of international students to boost tuition revenue. Track financial performance and adjust pricing strategies as needed.
 - **Enhance Financial Sustainability:** Reinvest a portion of the revenue into program development and expansion.
- **Equity-Focused Grant Securing:**
 - **Attract Grants:** Apply for and secure grants from organizations such as Fulbright, USAID, and UNESCO to support equity initiatives and international programs.
 - **Leverage Funding Opportunities:** Use grant funds to enhance programs, support scholarships, and strengthen partnerships with disadvantaged regions.



Integrated Implementation Plan

Balancing Equity and ROI.

Enrich Academic Environment

Enhance the academic environment by fostering cultural exchanges, promoting collaborative research, and integrating diverse perspectives to create a dynamic and inclusive learning community.

Actions:

Foster Cultural Exchanges:

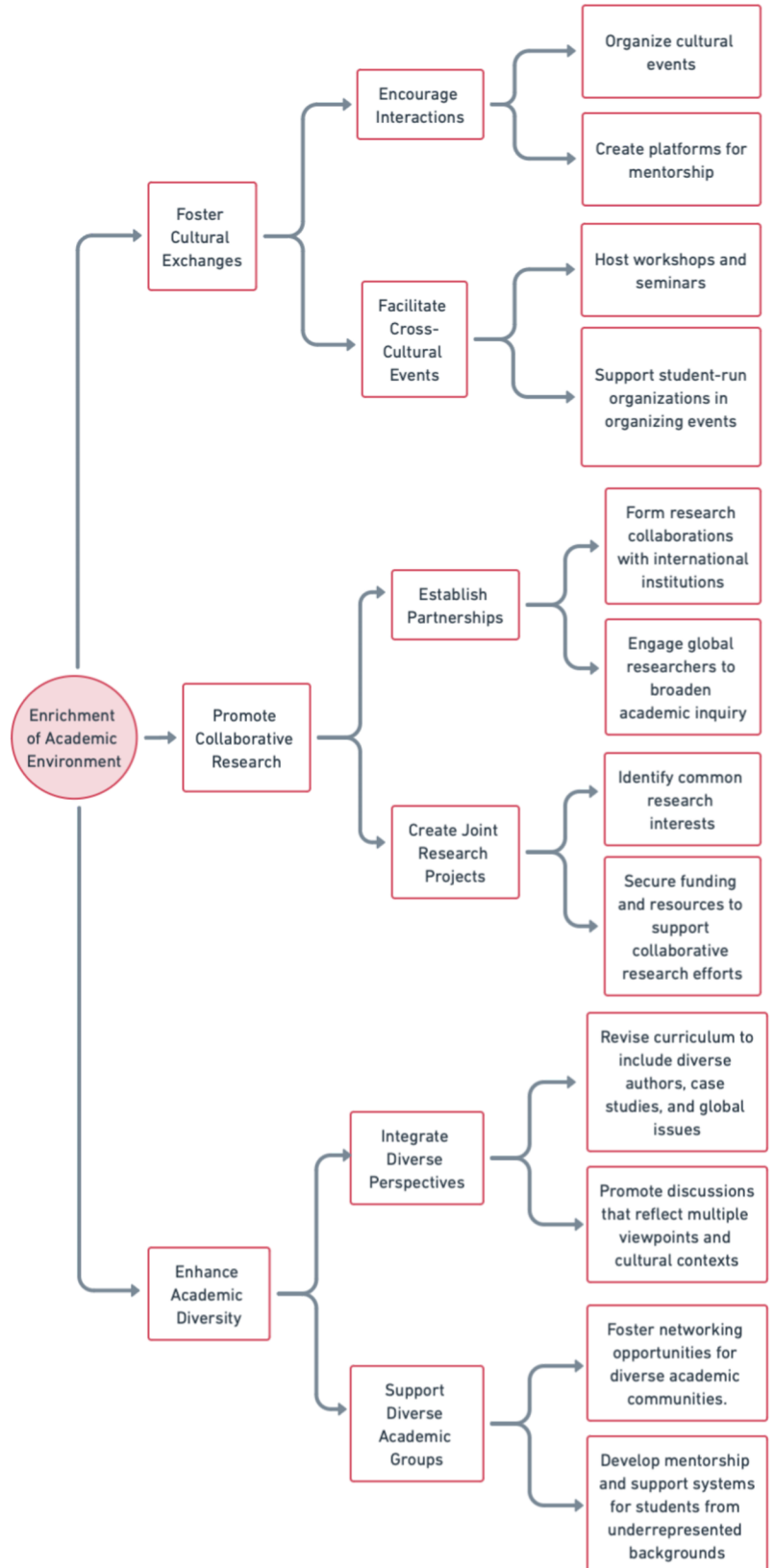
Organize cultural events and discussion forums to promote engagement among students and faculty from diverse backgrounds. Support student-run organizations in hosting events that celebrate cultural diversity.

Promote Collaborative Research:

Form research collaborations with international institutions to share knowledge and resources. Develop joint research projects to explore common interests and secure funding for continued collaboration.

Enhance Academic Diversity:

Revise curriculum to include diverse perspectives and global issues, ensuring that multiple viewpoints are represented. Establish support systems for students from underrepresented backgrounds and facilitate networking opportunities for diverse academic communities.



Integrated Implementation Plan

Balancing Equity and ROI.

Reinvest and Scale-Up

Utilize generated revenue and external funding to expand existing programs, enhance equity initiatives, and sustain growth.

Actions:

Allocate Revenue

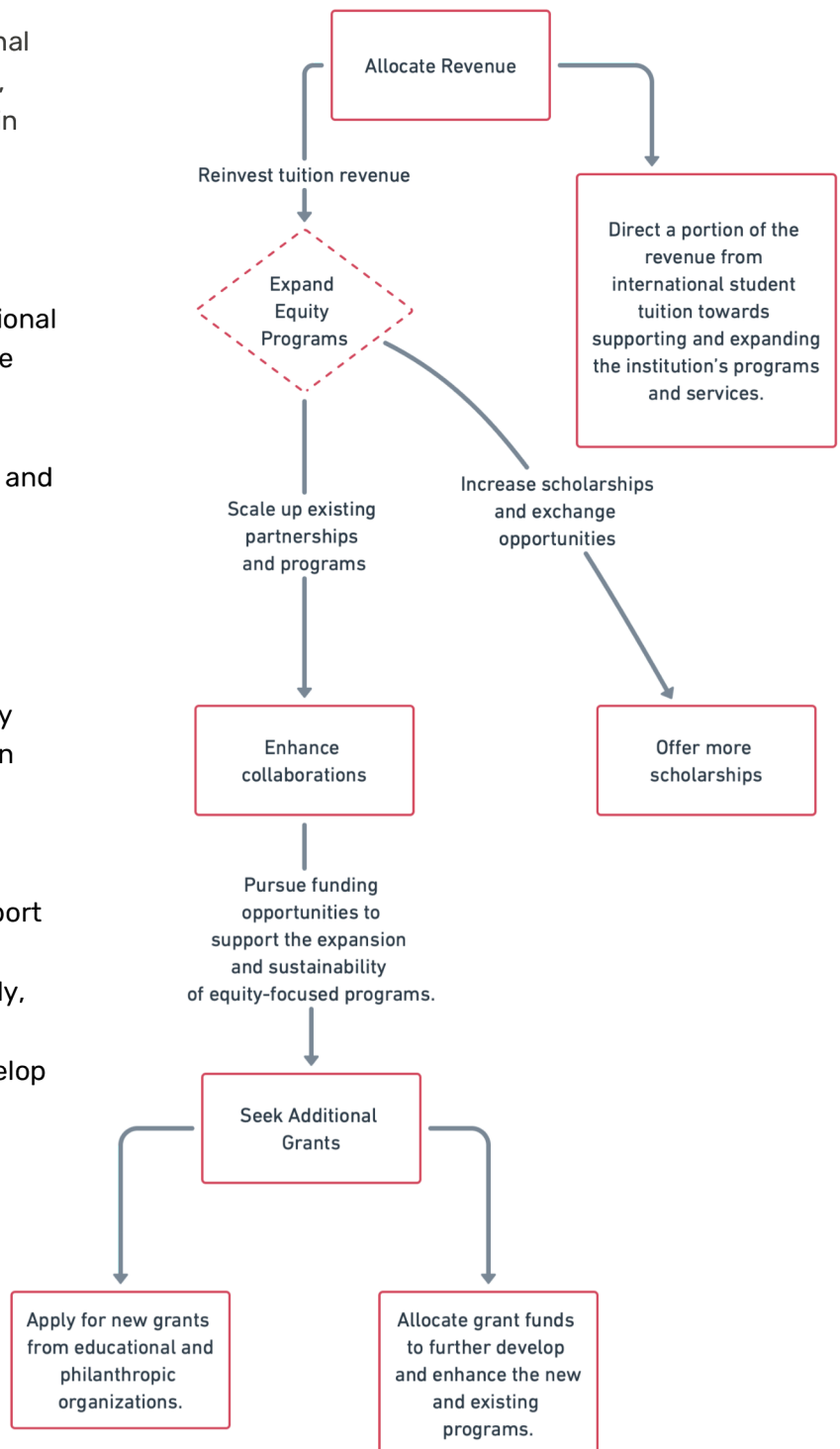
Reinvest tuition revenue into institutional initiatives by directing a portion of the revenue from international student tuition towards supporting and expanding the institution's programs and services.

Expand Equity Programs

Scale up existing partnerships and programs by enhancing current collaborations with socioeconomically disadvantaged institutions to broaden their impact.

Seek Additional Grants

Pursue funding opportunities to support the expansion and sustainability of equity-focused programs. Additionally, support expanded programs by allocating grant funds to further develop and enhance the new and existing programs.



Integrated Implementation Plan

Balancing Equity and ROI.

Continuous Improvement Loop

Increase financial resources through tuition revenue and grants to support both strategies.

Actions:

Collect Feedback:

Collect feedback from students, faculty, and partner institutions to understand their experiences and identify areas for improvement.

Assess Program Outcomes:

Evaluate success metrics and measure impact by reviewing performance indicators and outcomes to determine how well the programs are meeting their objectives.

Refine Programs:

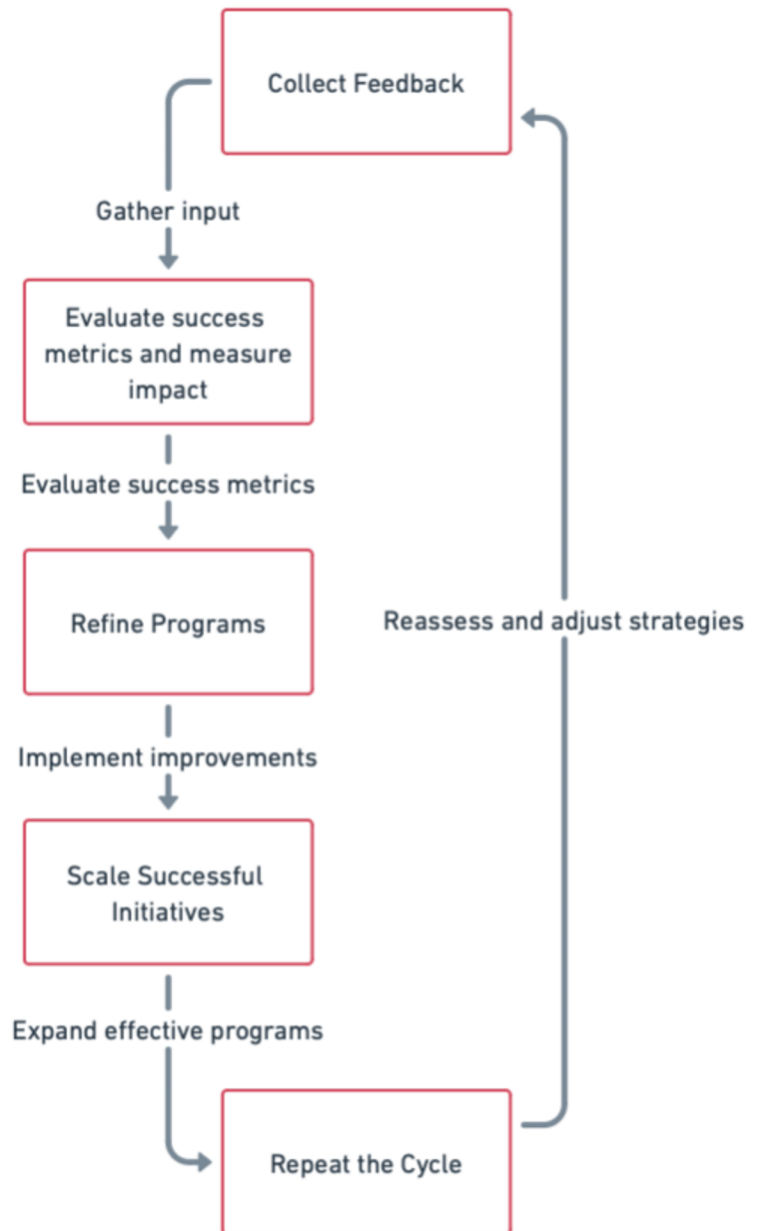
Implement improvements based on feedback and assessment by making necessary adjustments and enhancements to address identified issues and optimize program effectiveness.

Scale Successful Initiatives:

Expand effective programs and partnerships by growing and replicating successful programs and collaborations to increase their reach and impact.

Repeat the Cycle:

Reassess and adjust strategies by continuously revisiting and refining strategies to ensure ongoing effectiveness and alignment with goals.



Conclusion

Innovative Strategies for Global Reach & Equity

Porterville College's dual-focused strategy, blending equity-based and revenue-generating approaches, offers a transformative path for expanding our international presence. This strategy aims to enhance our academic environment, elevate our reputation, and ensure long-term financial stability.

Equity-Focused Initiatives: By partnering with institutions in disadvantaged regions and launching global educational programs, we foster academic access and cultural enrichment. Our exchange programs and scholarships support underrepresented students, promoting social justice and bridging educational gaps. Projects like Engineers Without Borders and international virtual exchanges further our commitment to global citizenship.

Revenue-Generating Strategies: Recruiting international students through partnerships with private 4-year institutions and offering viable transfer pathways address revenue needs. This approach ensures financial stability, enhances our reputation, and attracts additional funding. Guaranteed admissions and scholarships help maintain this steady influx of students.

Interconnected Value: Combining equity and ROI strategies creates a robust framework for international growth. Exchange programs enrich our academic environment, while transfer pathways support financial goals. This dual approach enhances our global standing and ensures sustainability.

Implementation and Improvement: Our plan includes establishing partnerships, launching programs, and tracking progress. Continuous assessment and refinement of our efforts will ensure we meet both equity and ROI objectives, creating a cycle of growth and enhancement.

In summary, this strategy embodies Porterville College's commitment to global education and financial health. By integrating equity-driven and revenue-focused tactics, we address diverse student needs and build a sustainable model for success, positioning us at the forefront of international education.