

PORTERVILLE COLLEGE

2018 FACILITIES MASTER PLAN



PROCESS



- ✓ Organize
- ✓ Schedule
- ✓ Vision

- ✓ Collect
- ✓ Assess
- ✓ Document

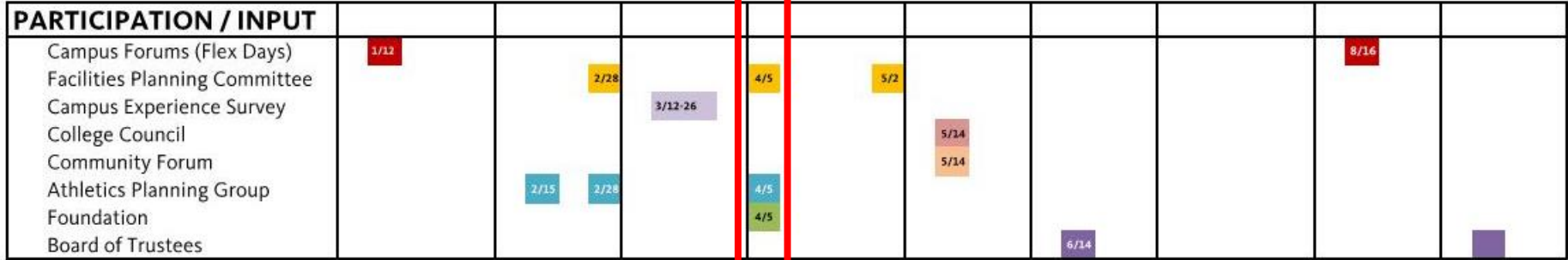
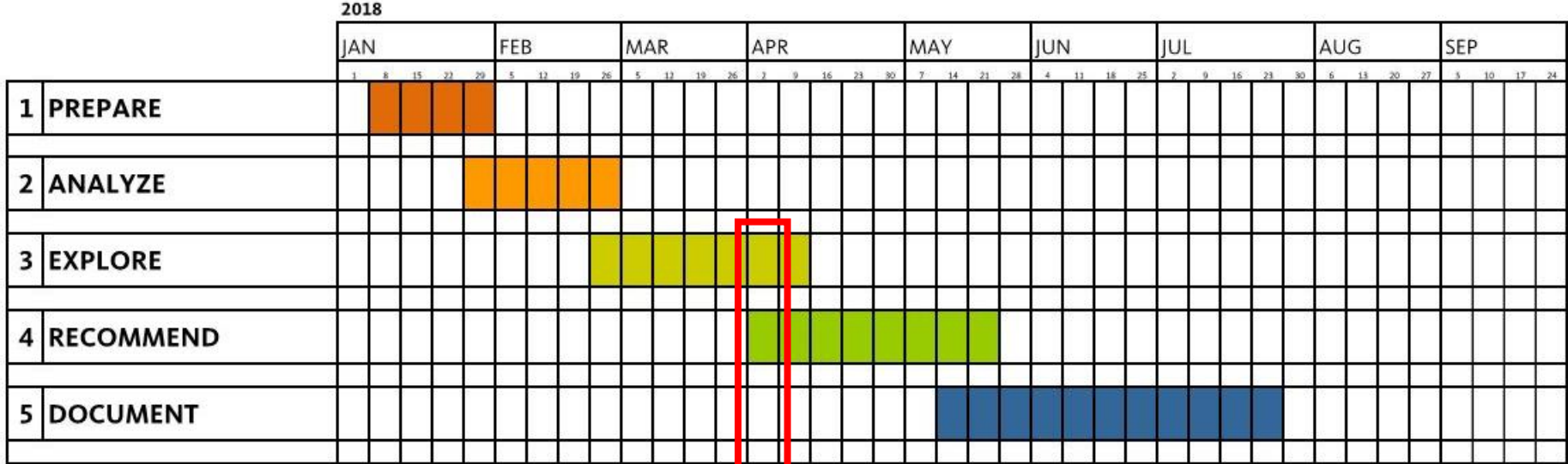
- ✓ Link
- ✓ Develop
- Evaluate

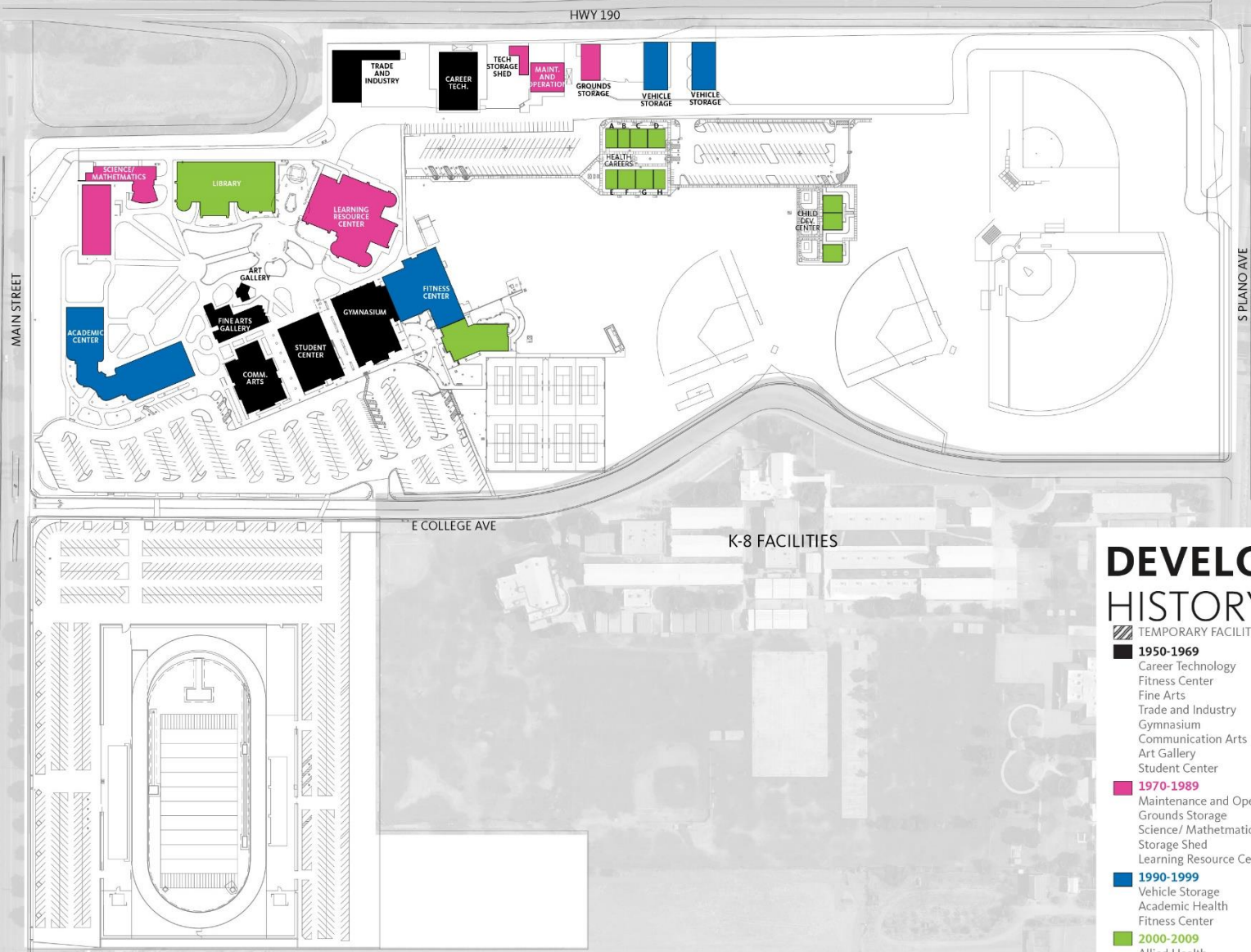
- Develop
- Strategize
- Recommend

- Share
- Document
- Approve



PROJECT SCHEDULE





DEVELOPMENT HISTORY

-  TEMPORARY FACILITIES
-  **1950-1969**
 - Career Technology
 - Fitness Center
 - Fine Arts
 - Trade and Industry
 - Gymnasium
 - Communication Arts
 - Art Gallery
 - Student Center
-  **1970-1989**
 - Maintenance and Operations
 - Grounds Storage
 - Science/ Mathematics
 - Storage Shed
 - Learning Resource Center
-  **1990-1999**
 - Vehicle Storage
 - Academic Health
 - Fitness Center
-  **2000-2009**
 - Allied Health
 - Child Development Center



UPCOMING PLANS

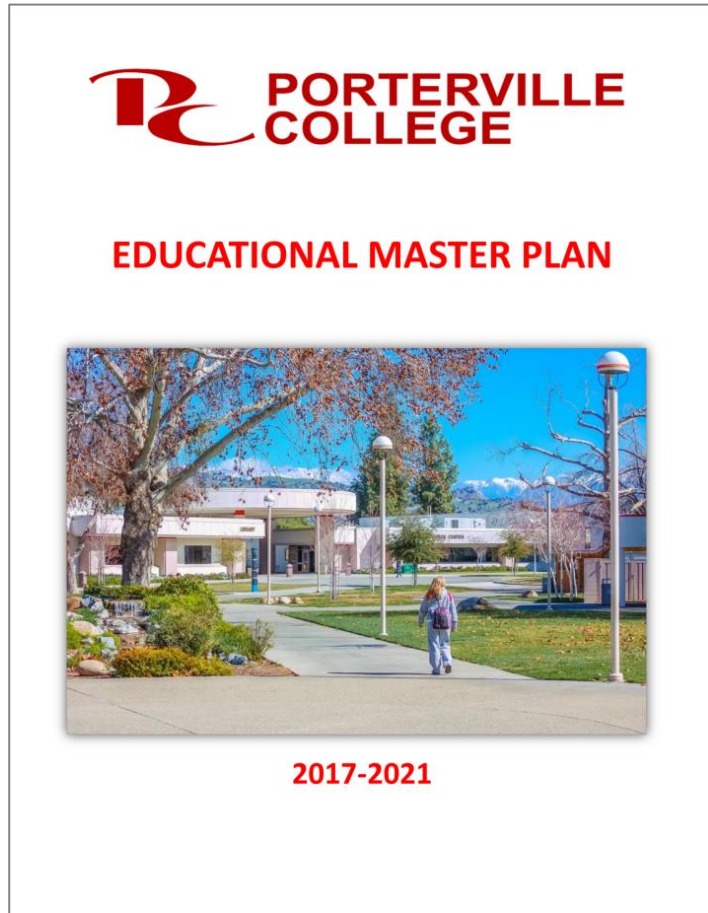
PARKING LOT REHABILITATION

PLANT LIST

- [M/L] *Blubine frutescens* 'Tiny Tangerine' – Orange Bulbine
- [M/L] *Callistemon viminalis* 'Little John' – Dwarf Bottle Brush
- [M] *Clytostoma callistegiodes* – Lavender Trumpet Vine
- [M] *Dietes bicolor* – Fortnight Lily
- [M] *Eunonymus fortunei* 'Colorata' – Purple Leaf Winter Creeper
- [M] *Lagerstroemia indica* – Crape Myrtle
- [M] *Nandina domestica* 'gulf stream' – Heavenly Bamboo
- [M] *Pistacia chinensis* – Chinese Pistache
- [M] *Rosa melgalpio* – Star Drift Ground Cover Roses
- [M] *Tulbaghia violacea* – Society Garlic

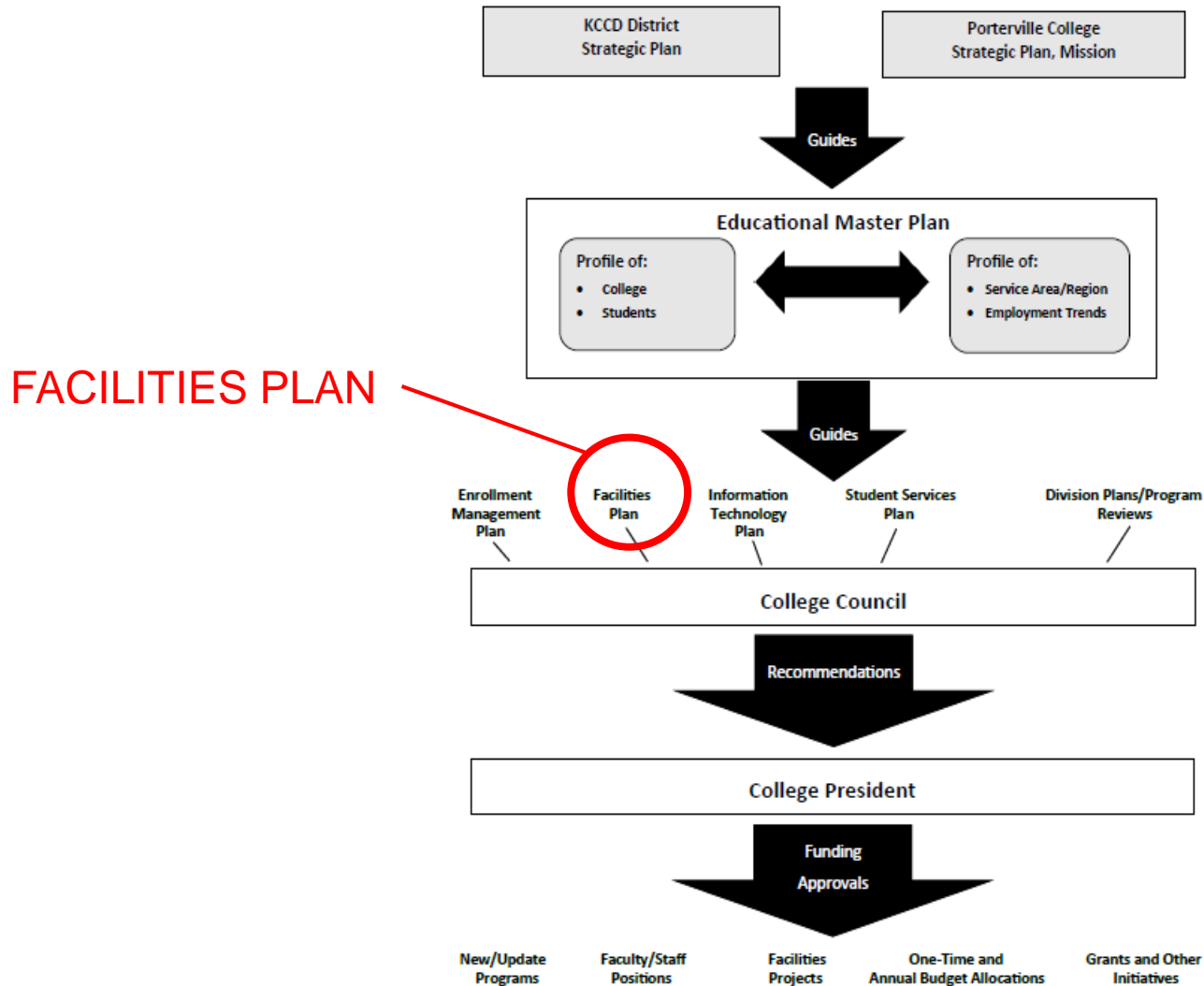


EMP – FMP LINKAGES



- Master Plan Framework
- Strategic Goals
- Projected Growth Rate
- Future Need for Space

MASTER PLAN FRAMEWORK



STRATEGIC GOALS

Porterville College Strategic Plan

The college's strategic plan built upon the institutions mission, values and philosophy. The college identified five goals and created a series of objectives to pursue over the next three years. The goals identified were:

Strategic Goal #1: Maximize Student Success

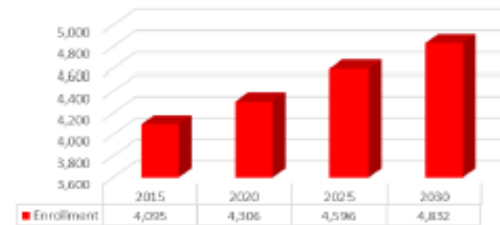
Strategic Goal #2: Advance Student Equity Measures

Strategic Goal #3: Ensure Student Access

Strategic Goal #4: Enhance community Connections

Strategic Goal #5: Strengthen organizational Effectiveness

Porterville College Future Enrollment Growth Projections



Source: MAAS Companies projections; based on unduplicated credit enrollments for fall semesters

The revised projections for WSCH show a realistically achievable rate of growth as well. Using the 2015 Fall Semester as a baseline, WSCH is projected to grow from 46,599 to 56,276 by the year 2030.

Porterville College Future WSCH Growth Projections



Source: MAAS Companies projections; based on unduplicated credit enrollments for fall semesters

MEASURES OF SUCCESS

ACCESSIBLE

AESTHETICALLY PLEASING

COMMUNITY FOCUSED

SUSTAINABLE

INTEGRATED TECHNOLOGY

IT HAPPENS

SHARED VISION

IMPROVE EFFICIENCIES

FEEL OPTIMISTIC

LEGACY

EFFECTIVE LEARNING ENVIR.

SAFE

LONG RANGE

NEW AND CREATIVE

REALISTIC

PARTICIPATORY PROCESS

EQUITABLE

INTEGRATED

FACILITIES PLANNING PRINCIPLES (DRAFT)

Maximize **Student Success**

- Improve access to student support services
- Develop indoor and outdoor spaces to encourage collaboration and enhance student engagement

Reinvest in College Facilities

- Rejuvenate facilities to support program needs
- Enhance instructional space to enhance learning outcomes
- Replace inefficient and aging facilities

Right-Size Campus to Address Needs

- Align the projected inventory with state guidelines
- Develop flexible, multi-purpose facilities to adapt over time
- Maximize land use to align with college priorities

Improve Campus **Organization**

- Improve functional zoning and operational efficiencies
- Improve access to programs and services
- Enhance physical connections (pedestrian, bike, vehicular)

Enhance Community **Connections**

- Increase visibility and access to the campus
- Develop campus to enhance community engagement
- Strengthen partnerships and shared use

Promote **Stewardship** of Resources

- Optimize available resources
- Position to maximize state and local funding
- Increase awareness and create a culture of sustainability

NEXT STEPS

