

# Campus Safety Space Proposal

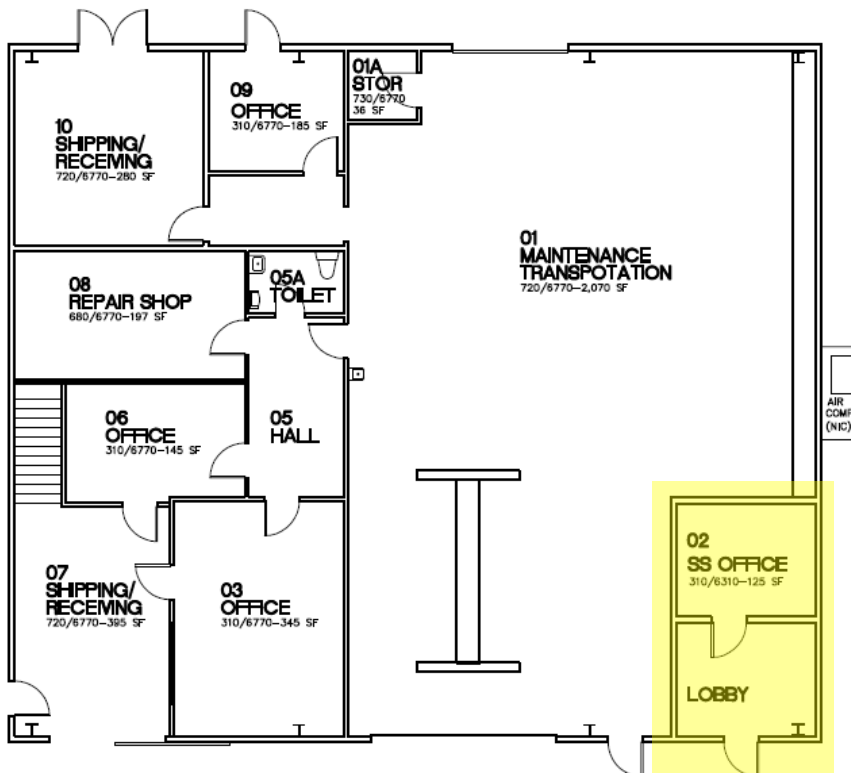
Porterville College Department of Public Safety

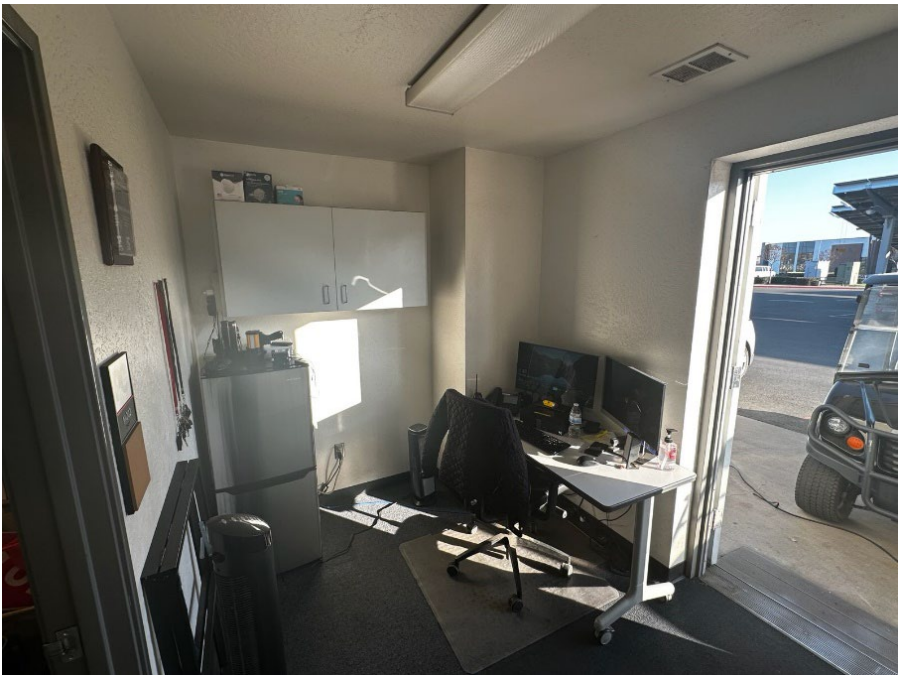


The following proposal outlines the need for space for the Department of Public Safety and a potential move to the former National University offices, located in a more centralized area on campus. This relocation is crucial to address the department's growing needs, improve campus safety response, and enhance communication capabilities, especially with an expanding campus with new property to the southeast of the college. The current office space is no longer adequate for the department's expanding staff, nor does it support effective communication with the entire campus, especially with the ongoing construction and expansion efforts.

## Current Spacing

The Department of Public Safety is essential to maintaining a safe and secure environment for students, faculty, staff, and visitors at Porterville College. Over the years, the department has grown significantly, both in terms of staff size and responsibilities. 4 years ago, the department operated from the corner office located on the far east side of the Maintenance and Operations building with just three employees. Today, the department has expanded slightly to accommodate 1 Full timer, 4 subs, a Resource Officer, Student Workers and Safety Manager. Within this space is a single shared workstation and storage for other equipment used by the department (first aid, AED, radios, surveillance monitors, traffic equipment, key cabinets, etc.), all within the same overcrowded space. As the college grows and expands, so does the demand for more robust public safety services.





## ***Need for a More Centralized Location***

Relocating the Department of Public Safety to the former National University offices is a critical step toward meeting the growing needs of Porterville College and the Department of Public Safety. A more centralized location will improve communication, enhance emergency response times, and accommodate the department's expanding staff. It will also support the college's growth, ensuring that DPS has the resources and space needed to continue providing a safe and secure environment for the campus community.



### **1. Enhanced Accessibility for the Campus Community**

The Department of Public Safety's current location, though functional, is at the back end of the campus and is not easy to spot if you're not familiar with the campus. Students, employees and visitors throughout the years have reported having a difficult time locating the department office. Relocating to the former National University offices, which are more centrally located, would significantly improve the department's visibility and accessibility to all. This central location would allow for faster response times to incidents and emergencies across campus, ensuring that DPS can reach all areas in a timely and efficient manner.

## **2. Improved Communication and Radio System Functionality**

One of the critical concerns for the department is the outdated and failing radio system. Our current location presents significant limitations in terms of radio signal strength, particularly as new properties are being developed to the southeast of the college. The new campus expansion requires a radio communication system that can cover a larger geographical area. A centralized location within the campus would improve the radio system's effectiveness by ensuring that transmissions can reach all areas, including the newly developed southeast properties. This is vital for ensuring that DPS officers can respond quickly to emergencies and maintain communication across the entire campus.

## **3. Growing Department Needs**

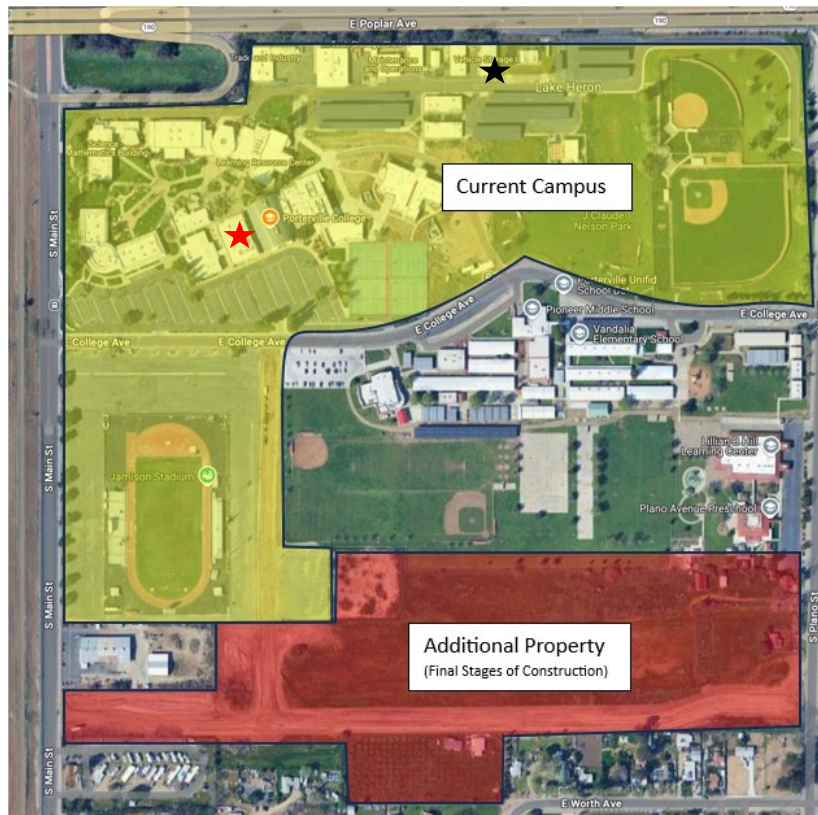
The Department of Public Safety has seen small but significant growth in both staff and responsibilities over the years. From a small team of three employees, we now require office space for 10 people including our Student Workforce through the Student Worker Program. This is especially true for larger scale events that require more personnel on campus at once, such as Commencement, Job Fair, HS Senior Day, Welcome Day, and District Office functions such as Board Meetings. The current office space is no longer sufficient to house the growing team, programs and equipment needed to efficiently carry out day to day operations. We need additional space to accommodate our staff, provide necessary resources, and ensure that our team can work effectively. This includes space for daily increased operational functions, small group trainings and meetings, more space for equipment, and areas for confidential discussions with students and anyone having to report an incident. The former National University offices would provide extra space for the department to meet these expanding needs.

## **4. Improved Campus Safety and Response Coordination**

A more centralized location for the Department of Public Safety would also allow for better coordination with other campus departments. Being centrally located would facilitate quicker responses to campus-wide events, emergencies, or routine safety checks. The location would also encourage more interaction with faculty, staff, and students, fostering a stronger relationship between DPS and the campus community, which is essential for maintaining a safe environment.

## **5. Space for Future Growth**

As Porterville College continues to expand, the demands placed on the Department of Public Safety will only increase. Having a more centralized office space will provide the department with added flexibility to grow and adapt to future needs, whether that involves hiring more staff, investing in new technologies, or accommodating new safety initiatives. The former National University offices are ideally situated to meet the current needs, that aligns with the college's growth strategy.



## Benefits to the Campus Community

### 1. **Faster Emergency Response Times**

With a more centrally located office, the department will be better positioned to respond to incidents across the entire campus. This will result in improved safety for students, faculty, and staff by reducing response times and increasing the visibility of campus safety officers.

### 2. **Stronger Communication Across Campus**

A more centralized location would improve radio communication for DPS and ensure reliable coverage across the entire campus, especially in newly developed areas. This would enhance the department's ability to manage incidents and ensure that the entire campus is connected through effective communication systems.

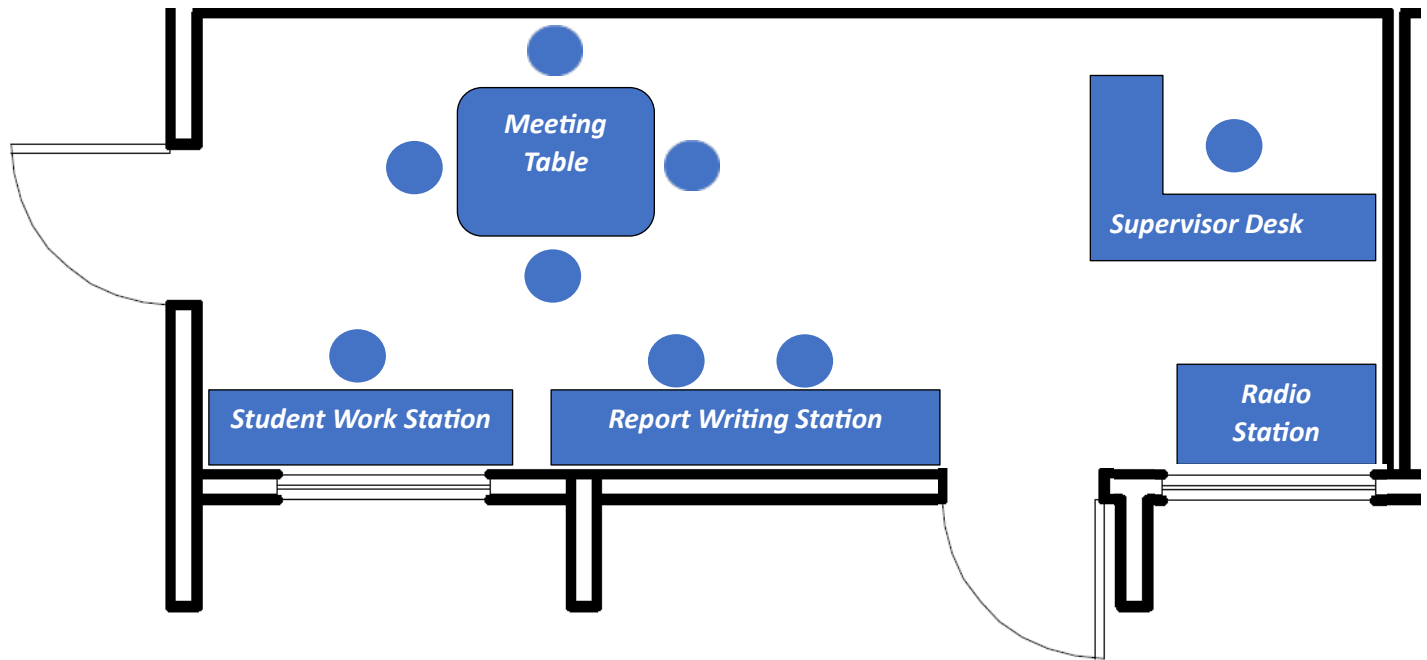
### 3. **Improved Perception of Campus Safety**

Having the Department of Public Safety in a more visible, central location sends a strong message to the campus community that safety is a priority. The department's accessibility and presence will encourage a greater sense of security among students, staff, and faculty.

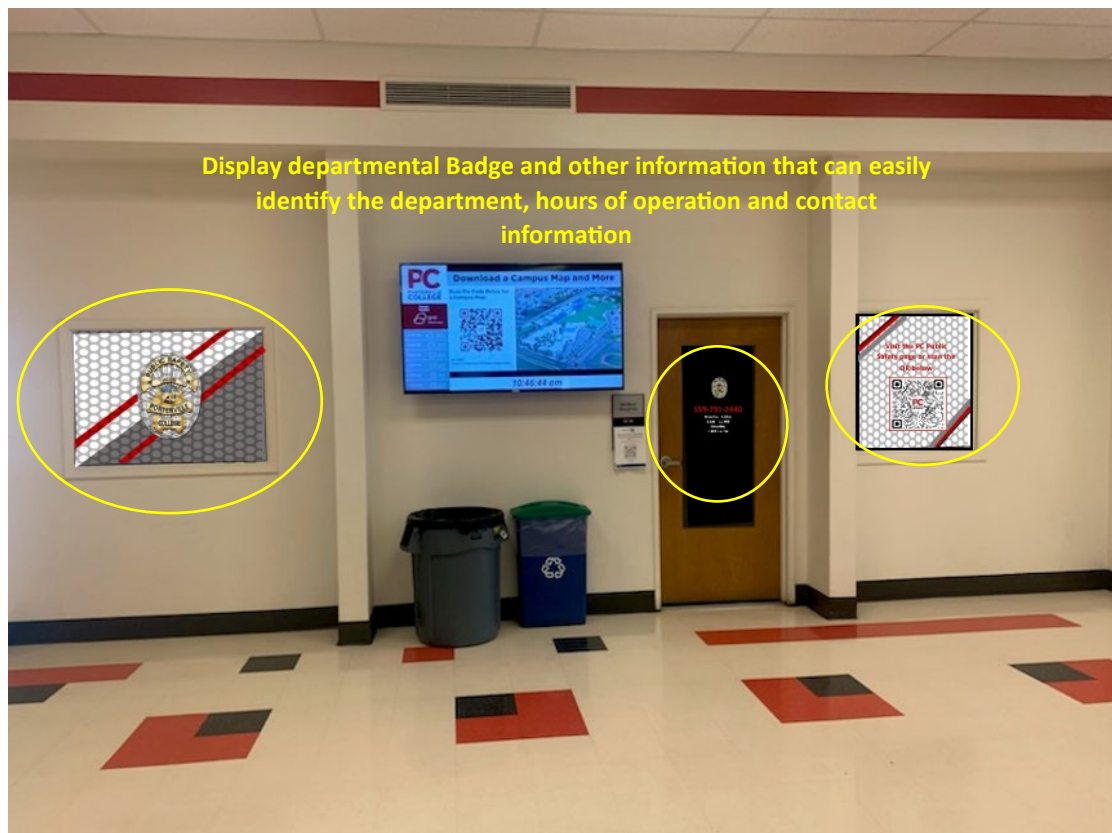
### 4. **Support for Campus Growth**

As the college expands, so too must the resources dedicated to ensuring a safe environment. A more centralized office space for DPS directly supports the growing demands of the department, providing the necessary space and resources to maintain a high level of safety on campus.

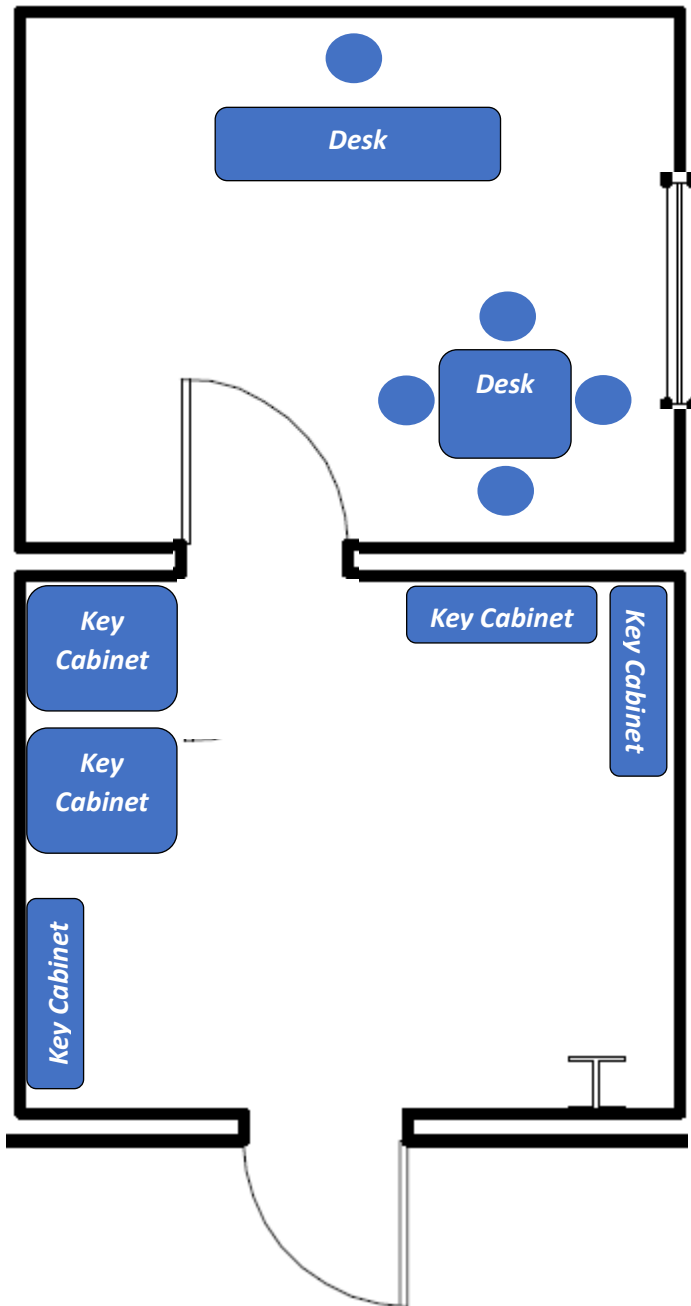
**SC-01A Layout (Not to Scale)**



**SC-01A Office Space Exterior Providing More Visibility to Public Safety**



**MO-02 Layout (Not to Scale)**



The current Public Safety office would be used to house the Key management equipment and the key cabinets currently sitting on the floor of the Public Safety office, creating a dedicated space for the current key equipment. Housing the key cabinets and equipment is a step towards establishing a more effective key management system with a dedicated space.