

Our Mission

With students as our focus, Porterville College provides our local and diverse communities quality education that promotes intellectual curiosity, personal growth, and lifelong learning, while preparing students for career and academic success.

Accessibility Note:

If you are an individual with a disability and need accommodations, please contact Jodie Logan at 559-791-2208

Present: Primavera Arvizu, Michael Carley, Araceli Carranza, Reagen Dozier, Ethan Hartsell, Mary Jo Jordan, Jasmin Quinones, Robert Simpkins, Erin Wingfield and Julian West

Absent: Connie Gutierrez, Roger Perez and Alex Ramos

I. New Discussion Items

- a. Call to Order
VP Arvizu call the meeting to order at 2:30 pm.
- b. Approval of Agenda
The 11/2/21 agenda was approved.
M/S/C: Reagen Dozier/Erin Wingfield
- c. Approval of Minutes
The minutes were approved for 10/5/21.
M/S/C: Erin Wingfield/Ethan Hartsell
- d. Reports
 - o Data Team Update (Mike)
We reviewed a dashboard DJ recently created, showing enrollment trends, with demographic breakouts, so we could see which groups are most impacted by the pandemic. Among groups who have been less likely to enroll during COVID are:
 - Male students
 - Older students
 - First-generation students
 - Economically disadvantaged students and those receiving Pell grants (# of Pell students down by around half from fall 2019 to fall 2021)Recent high school graduates (2020 and 2021) are down. Local high schools graduated fewer students AND we got a lower percentage of recent high school graduates. And, continuing students are also down, by more than 1,000 from fall 2019 to fall 2021.
We had some discussion, speculation, and anecdotal reports on the impact of recent changes at the CSUs and other 4-year colleges impacting our enrollment, of both new and continuing students. It's unclear what these policies will look like in upcoming years and how they will impact us. *Discussion Ensued (see chart on next page)*



Pathways to Success & Equity Committee

PSEC Minutes

Tuesday November 2, 2021

2:30 pm – 3:30 pm – Zoom

Porterville College Enrollment Yields by Service Area High School Fall 2016-Fall 2020 Students Enrolled at Census															
PC Service Area Public/Charter Schools	2016			2017			2018			2019			2020		
	HS Grad Total	Enrolled at KCCD in Fall	Capture Rate	HS Grad Total	Enrolled at KCCD in Fall	Capture Rate	HS Grad Total	Enrolled at KCCD in Fall	Capture Rate	HS Grad Total	Enrolled at KCCD in Fall	Capture Rate	HS Grad Total	Enrolled at KCCD in Fall	Capture Rate
Butterfield Charter High	90	13	14.4%	92	23	25.0%	71	26	36.6%	90	23	25.6%	93	16	17.2%
Granite Hills High	244	107	43.9%	263	109	41.4%	294	129	43.9%	275	139	50.5%	241	86	35.7%
Harmony Magnet Academy	92	36	39.1%	113	40	35.4%	132	38	28.8%	108	33	30.6%	121	28	23.1%
Monache High	334	146	43.7%	357	155	43.4%	423	186	44.0%	432	177	41.0%	378	141	37.3%
Porterville High	400	154	38.5%	412	195	47.3%	412	201	48.8%	420	199	47.4%	460	210	45.7%
Strathmore High	59	20	33.9%	68	29	42.6%	65	26	40.0%	76	20	26.3%	72	15	20.8%
Summit Charter Academy	48	33	68.8%	34	18	52.9%	63	37	58.7%	79	44	55.7%	75	34	45.3%
Total	1,267	509	40.2%	1,339	569	42.5%	1,460	643	44.0%	1,480	635	42.9%	1,440	530	36.8%
PC Extended Service Area School	HS Grad Total	Enrolled at KCCD in Fall	Capture Rate	HS Grad Total	Enrolled at KCCD in Fall	Capture Rate	HS Grad Total	Enrolled at KCCD in Fall	Capture Rate	HS Grad Total	Enrolled at KCCD in Fall	Capture Rate	HS Grad Total	Enrolled at KCCD in Fall	Capture Rate
Lindsay Senior High	233	32	13.7%	205	27	13.2%	235	22	9.4%	235	24	10.2%	228	11	4.8%
PC Service Area AdultEd/Continuation/Regional Employment Centers	HS Grad Total	Enrolled at KCCD in Fall	Capture Rate	HS Grad Total	Enrolled at KCCD in Fall	Capture Rate	HS Grad Total	Enrolled at KCCD in Fall	Capture Rate	HS Grad Total	Enrolled at KCCD in Fall	Capture Rate	HS Grad Total	Enrolled at KCCD in Fall	Capture Rate
Citrus High	59	13	22.0%	83	13	15.7%	85	15	17.6%	96	24	25.0%	110	5	4.5%
Porterville Adult	116	13	11.2%	136	19	14.0%	115	13	11.3%	140	11	7.9%	98	3	3.1%
Total	175	26	14.9%	219	32	14.6%	200	28	14.0%	236	35	14.8%	208	8	3.8%
PC HS Enrollment Yield	1,675	567	33.9%	1,763	628	35.6%	1,895	693	36.6%	1,951	694	35.6%	1,876	549	29.3%

Annotations and Methodology: The preceding tables represent the number and percent of high school graduates enrolled on census day during the first fall semester after high school graduation to any college within the district. Students who dropped for covid related reasons were counted as enrolled on census. The number of high school graduates comes from the California Department of Education Data and Statistics site or from the high school registrar's office. The tables are separated by High School Type:
 • Public/Charter, Extended Service Area, Adult Ed/Continuation/Regional Employment Centers.

Among things we hope to examine in upcoming meetings are undocumented student enrollment, foster youth, and our equity gaps, particularly gender. We also plan to look at persistence rates.

○ SEA Update (Erin)

Even though Student Services wasn't offering in person sessions for all the matriculation components and FASA workshops, they were held virtually. As of August, these workshops are being held on site at the high schools. Today during the Counselors Retreat, the guidance counselors shared they are having a hard time getting students interested in the workshop regardless of the incentives given.

Out since August doing the career/major exploration workshops, CCApplly application, orientations (ongoing October and November). Just had our College and Financial Aid night (virtually).

11/2/21 held Counselor and Principal Retreat.

October and November Financial Aid is out doing their FASA workshops.

Gearing up for counseling and ed plan sessions on site at the high schools in February and March.

PC Connection also coming up in April 2022.

PC Salutes our Veterans was 11/1/21.

Reg Fest starts 11/3/21 – 11/9/21 for priority students.

First Gen Day 11/8/21

Continuing Reg Fest 11/17, 11/18, and 11/19.

Several events with our Adult Ed partners and ESL express enrollment coming up all the way through January, along with the equity work.

They will be submitting the SEA Program Review to Strategic Planning later this month. They also just submitted the UMOJA application 11/1/21. The new equity report will be due November 30, 2022 (application period 2022-2025).

○ ASPC Update (Jasmin)

This month is Native American month. They will be having Amy and a Mental Health Awareness workshop that the Tule River Resource Center is helping with, along with the Native American Club will have tables on 11/17/21.

ASPC representatives should be assigned to committees by the end of the week.

e. Social Justice Proposed Committee Charge

The committee reviewed the proposed committee charge. The committee’s proposed name is Social Justice Action Committee. The committee made the following recommended changes:

1. Include staff on function 2
2. Add sub-committee to of college council.
3. Revise the language regarding member appointment. Admin appointed by college President, faculty appointed by Senate President, and classified appointed by CSEA President.
4. Combine objectives 1 and 2 and clarify.
5. Objective 4 change study to survey and university to college.
6. List number of each admin, faculty and staff will be serving on the committee and state the faculty should be from a variety of divisions.

f. PSEC Proposed Committee Restructure

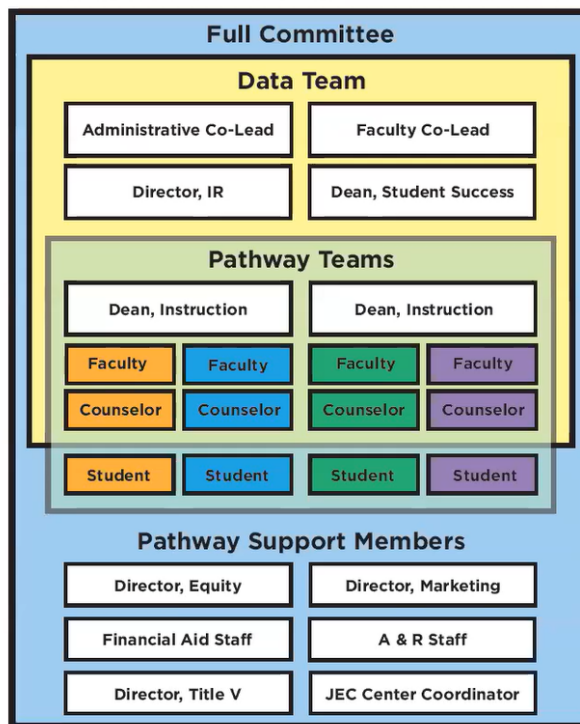
- o Committee Name

Bob proposes that we change PSEC to Guided Pathway Committee (GPC). Most members like the new name.

- o Restructure

On going discussion regarding the bigger PSEC group. Bob took the recommendations and revised his graph, see below.

PSEC RE-STRUCTURE PROPOSAL



Will be meeting with Erin Wingfield regarding the onboarding committee and possible overlap of responsibilities with PSEC.



Pathways to Success & Equity Committee

PSEC Minutes

Tuesday November 2, 2021

2:30 pm – 3:30 pm – Zoom

- e. ATD Conference Session Proposals
Tabled
- II. **Old Discussion Items**
- III. **Future Agenda Items**
 - Being Equity Minded/What is the message

The meeting was adjourned at 3:35 pm